

FOR REFERENCE

ITEM NO.	PartNo	DESCRIPTION	QTY.
1	85578012	STEERING GEAR SKID PLATE	1
2	85578013	TRANSMISSION SKID	1
3	85578014	FUEL TANK SKID	1
4	8563521	REAR DIFF SLIDER	1
5	85578020	REAR DIFF CLAMP WELDMENT	1
6	85033408	FRONT INBOARD FUEL TANK PENCIL BRACE	1
7	85033409	REAR INNER FUEL TANK PENCIL BRACE	1
8	85033410	REAR OUTER FUEL TANK PENCIL BRACE	1
9	11604516	U-BOLT, 31XX-2 SKID PLATES, REAR DIFF SLIDER	2
10	11588738	M10 X 1.5 X 25 HEX FLANGE BOLT	4
11	11548589	M10 X 1.5 U-NUT (PANEL THICKNESS RANGE 1.5-5.5)	2
12	11588724	M8 X 1.25 X 30 HEX FLANGE BOLT	11
13	11548587	M8 X 1.25 U-NUT	10
14	11546366	M10 X 1.5 HEX FLANGE LOCK NUT	7
15	11519388	M8 X 1.25 X 25 HEX SCREW AND WASHER	8
16	11602085	M8 X 1.25 U-NUT (PANEL THICKNESS 0.8-4.0)	7
17	11611334	M8 X 1.25 X 30 HEX SCREW AND WASHER ASM	2
18	11603624	M8 X 1.25 X 34.05 13mm HEX SOC, M-PT	4
19	8563520	RADIATOR SKID	1
20	11611883	M4.2 X 1.41 X 20 TORX PAN HEAD SCREW (BR POINT, T15)	4



AMERICAN EXPEDITION VEHICLES  
AEV-CONVERSIONS.COM (248) 926-0256  
51960 W. Twelve Mile Rd. Wixom, MI. 48393

DRAWN: MK

CHECKED: SR

DATE: 2021-06-17

ASSEMBLY, 31XX-2 SKID PLATES, MASTER

P/N: **A32P0010AC-22**

PROPRIETARY AND CONFIDENTIAL

THIS DOCUMENT CONTAINS PROPRIETARY INFORMATION WHICH SHALL NOT BE REPRODUCED, TRANSFERRED TO OTHER DOCUMENTS, DISCLOSED TO OTHERS, USED FOR MANUFACTURING, OR ANY OTHER PURPOSE WITHOUT PRIOR WRITTEN PERMISSION FROM AMERICAN EXPEDITION VEHICLES.

DO NOT SCALE DRAWING

UNLESS OTHERWISE SPECIFIED  
DIMENSIONS ARE IN MILLIMETERS  
TOLERANCES ARE:

LINEAR

ANGLE

.X ± 1.50mm

None ± 2.5°

.XX ± 0.75mm

.X ± 1.0°

.XXX ± 0.25mm

.XX ± 0.25°

MAT'L: SEE PART DRAWINGS

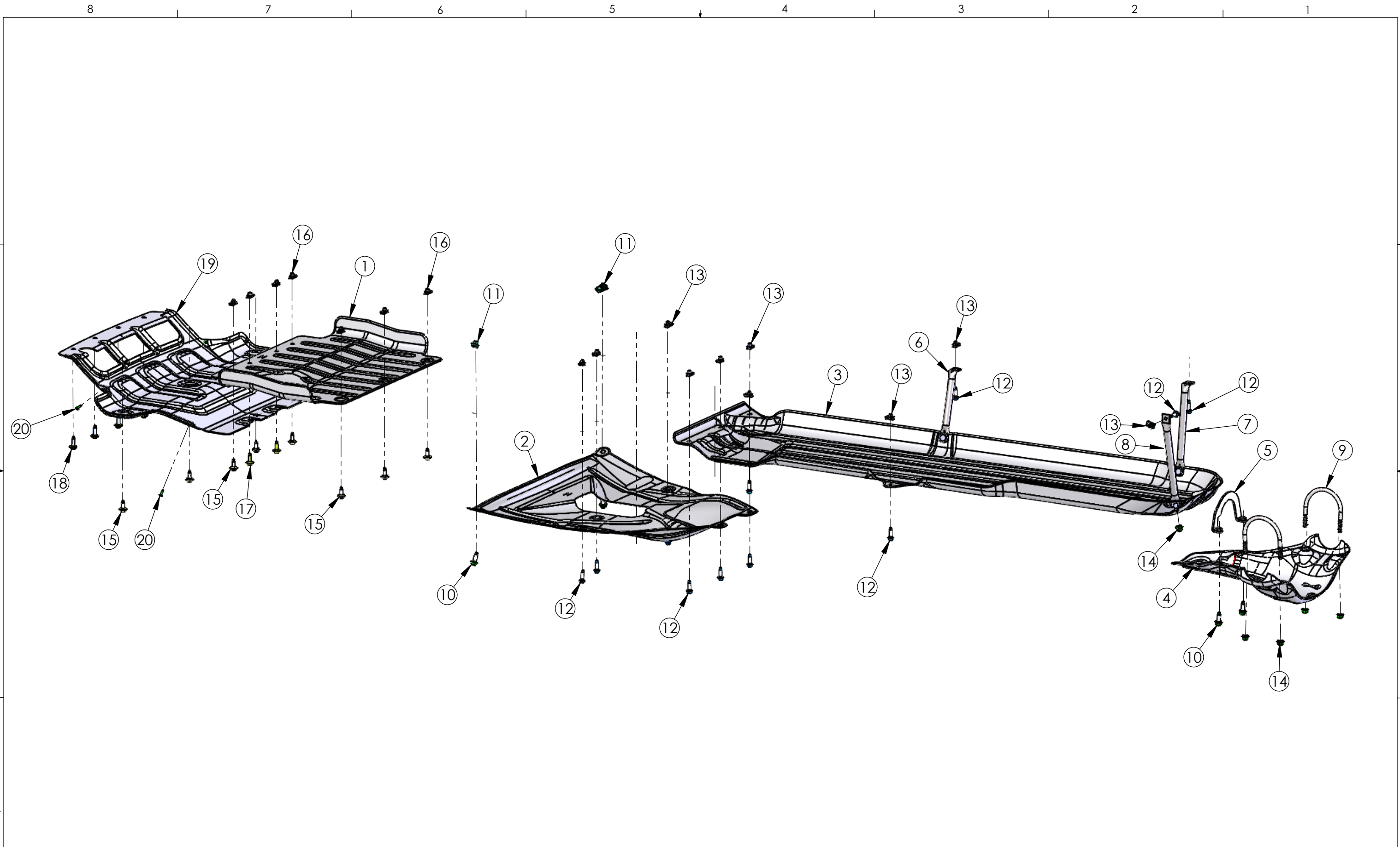
FINISH: SEE PART DRAWINGS

WEIGHT: 63.85 lbs

SIZE B

SCALE 1:12

SHEET 2 OF 3



**AMERICAN EXPEDITION VEHICLES**  
**AEV-CONVERSIONS.COM (248) 926-0256**  
**51960 W. Twelve Mile Rd. Wixom, MI. 48393**

DRAWN: MK		CHECKED: SR	DATE: 2021-06-17	ASSEMBLY, 31XX-2 SKID PLATES, MASTER		P/N: <b>A32P0010AC-22</b>	
<b>PROPRIETARY AND CONFIDENTIAL</b> <small>THIS DOCUMENT CONTAINS PROPRIETARY INFORMATION WHICH SHALL NOT BE REPRODUCED, TRANSFERRED TO OTHER DOCUMENTS, DISCLOSED TO OTHERS, USED FOR MANUFACTURING, OR ANY OTHER PURPOSE WITHOUT PRIOR WRITTEN PERMISSION FROM AMERICAN EXPEDITION VEHICLES.</small>				<b>DO NOT SCALE DRAWING</b> <small>UNLESS OTHERWISE SPECIFIED DIMENSIONS ARE IN MILLIMETERS. TOLERANCES ARE:</small>		MAT'L: SEE PART DRAWINGS FINISH: SEE PART DRAWINGS WEIGHT: 63.85 lbs	
				LINEAR	ANGLE	SIZE B	
				.X ± 1.50mm	None ± 2.5°	SCALE 1:10.5	
				.XX ± 0.75mm	.X ± 1.0°	SHEET 3 OF 3	
				.XXX ± 0.25mm	.XX ± 0.25°		