

# FOR REFERENCE

ITEM NO.	PART NUMBER	PartNo	DESCRIPTION	QTY.
1	D036566	85067968	T1 HD RR BMPR, SHIPPABLE ASSEMBLY	1
2	D040324	87843054	PENCIL BRACE RH WELDMENT	1
3	D040327	87843057	PENCIL BRACE LH WELDMENT	1
4	D041092	85798491	RH INNER BEZEL	1
5	D041096	85798492	LH INNER BEZEL	1
6	13526856_003-DELPHI - 35102299 - CONNECTOR ASM-SEALED		13526856_003-DELPHI - 35102299 - CONNECTOR ASM-SEALED	1
7	84304677_001.0001-CASE ASM-SPA WHL LK CYL_1		84304677_001.0001-CASE ASM-SPA WHL LK CYL_1	1
8	D037163	11519388	M8 X 1.25 X 25 HEX SCREW AND WASHER	2
9	D037542	11546463	M12 X 1.75 HEX NUT AND WASHER ASM	6
10	D037706	11546368	M14 X 2.0 HEX FLANGE NUT PREVAILING TORQUE	2
11	D047284	11519389	M8 X 1.25 X 30 HEX SCREW AND WASHER ASM	2

B ATHB0040AP25



**AMERICAN EXPEDITION VEHICLES**  
**AEV-CONVERSIONS.COM (248) 926-0256**  
 51960 W. Twelve Mile Rd. Wixom, MI. 48393

DRAWN: SR    CHECKED: SR    DATE:

**ASSEMBLY, T1 HD RR BMPR, MASTER**

P/N: **ATHB0040AP-25**

**PROPRIETARY AND CONFIDENTIAL**  
 THIS DOCUMENT CONTAINS PROPRIETARY INFORMATION WHICH SHALL NOT BE REPRODUCED, TRANSFERRED TO OTHER DOCUMENTS, DISCLOSED TO OTHERS, USED FOR MANUFACTURING, OR ANY OTHER PURPOSE WITHOUT PRIOR WRITTEN PERMISSION FROM AMERICAN EXPEDITION VEHICLES.

**DO NOT SCALE DRAWING**  
 UNLESS OTHERWISE SPECIFIED .X ± 1.50mm None ± 2.5°  
 DIMENSIONS ARE IN MILLIMETERS. .XX ± 0.75mm .X ± 1.0°  
 TOLERANCES ARE: .XXX ± 0.25mm .XX ± 0.25°

MAT'L: SEE PART DRAWINGS

FINISH: N/A

WEIGHT: 100.94 lbs

SIZE B

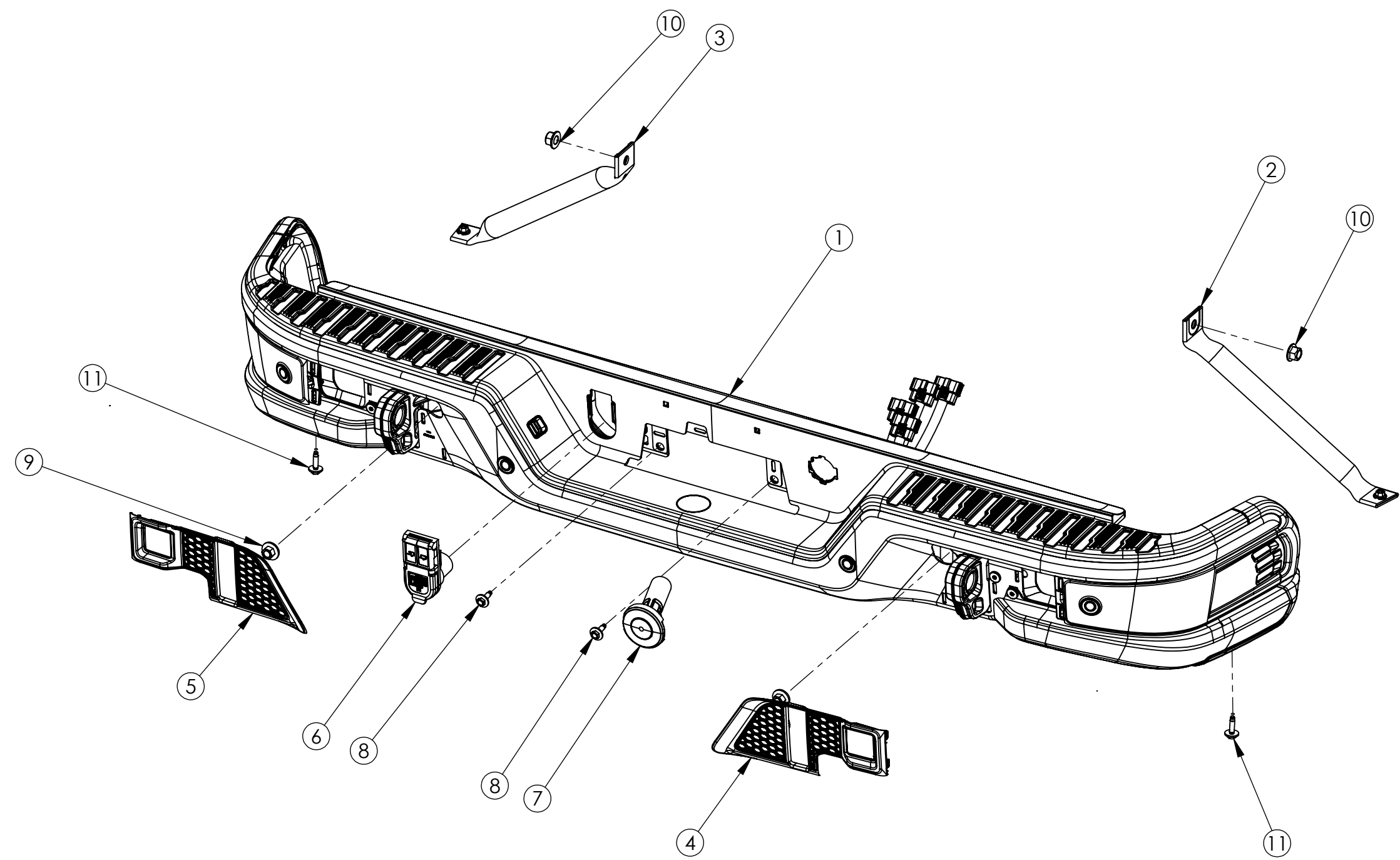
SCALE 1:8

SHEET 2 OF 4

8 7 6 5 4 3 2 1

D  
C  
B  
A

B ATHB0040AP25



**AMERICAN EXPEDITION VEHICLES**  
**AEV-CONVERSIONS.COM (248) 926-0256**  
 51960 W. Twelve Mile Rd. Wixom, MI. 48393

DRAWN: SR | CHECKED: SR | DATE:

**ASSEMBLY, T1 HD RR BMPR, MASTER**

P/N: **ATHB0040AP-25**

**PROPRIETARY AND CONFIDENTIAL**  
 THIS DOCUMENT CONTAINS PROPRIETARY INFORMATION WHICH SHALL NOT BE REPRODUCED, TRANSFERRED TO OTHER DOCUMENTS, DISCLOSED TO OTHERS, USED FOR MANUFACTURING, OR ANY OTHER PURPOSE WITHOUT PRIOR WRITTEN PERMISSION FROM AMERICAN EXPEDITION VEHICLES.

**DO NOT SCALE DRAWING**  
 UNLESS OTHERWISE SPECIFIED  
 DIMENSIONS ARE IN MILLIMETERS.  
 TOLERANCES ARE:

LINEAR .X ± 1.50mm  
 .XX ± 0.75mm  
 .XXX ± 0.25mm  
 ANGLE None ± 2.5°  
 .X ± 1.0°  
 .XX ± 0.25°  
 MAT'L: SEE PART DRAWINGS  
 FINISH: N/A

WEIGHT: 100.94 lbs

SIZE B | SCALE 1:8 | SHEET 3 OF 4

8 7 6 5 4 3 2 1

This page intentionally left blank

# FOR REFERENCE

ITEM NO.	SERIAL #	PartNo	DESCRIPTION	QTY.
1	D034628	87843024	CORNER OUTER STAMPING LOWER RH	1
2	D034629	87843025	CORNER OUTER STAMPING LOWER LH	1
3	D034649	85620389	CORNER INNER STAMPING LH	1
4	D037575	86518212	LOWER CORNER END CAP RH	1
5	D037576	86518211	LOWER CORNER END CAP LH	1
6	M8 X 1.25 U-NUT	11548587	M8 X 1.25 U-NUT	16
7	D034621	85049666	CENTER OUTER STAMPING	1
8	11601916_001-BOLT_SCREW		11601916_001-BOLT_SCREW	4
9	11547582_001-NUT-PUSH IN		11547582_001-NUT-PUSH IN	4
10	D038866	85043560	SPARE TIRE WINCH CAP BRACKET	1
11	D038869	86546169	TRAILER CONNECTOR BRACKET	1
12	D039291	11604697	(87843052) BOLT, FHCS, M8 X 1.25 X 37	12
13	D041103	85066898	CORNER BEZEL RH SUB-ASSEMBLY	1
14	D041107	85066897	CORNER BEZEL LH SUB-ASSEMBLY	1
15	D041176	87843033	UPR CORNER END CAP RH SUB-ASSEMBLY	1
16	D041180	87843034	UPR CORNER END CAP LH SUB-ASSEMBLY	1
17	D041088	85055009	TOP CAP SUB-ASSEMBLY	1
18	D015712	11611883	M4.2 X 1.41 X 20 TORX PAN HEAD SCREW (BR POINT, T15)	29
19	D036911	11548579	M4.2 X 1.41 U-NUT (PANEL THICKNESS 2.0-3.0)	7

ITEM NO.	SERIAL #	PartNo	DESCRIPTION	QTY.
20	23251664_001-ASM-LICENSE LAMP		23251664_001-ASM-LICENSE LAMP	1
21	23251665_001-ASM-LICENSE LAMP		23251665_001-ASM-LICENSE LAMP	1
22	D040480	87843047	RPA BEZEL RH	1
23	D040484	87843048	RPA BEZEL LH	1
24	84576948.geo_fiin001.002999	42707016	AXIAL SENSOR	4
25	D036871	11548580	M4.2 X 1.41 U-NUT	12
26	11548270_002-BOLT_SCREW		11548270_002-BOLT_SCREW	2
27	D041188	87843038	SBZA BRACKET LH SUB-ASSEMBLY	1
28	D041184	87843037	SBZA BRACKET RH SUB-ASSEMBLY	1
29	85569655	85569655	MODULE ASM - SIDE OBJECT SENSING ALERT RH	1
30	85569654	85569654	MODULE ASM - SIDE OBJECT SENSING ALERT LH	1
31	D036869	11601915	M8 X 1.25 X 27 T40 FLAT HD MPOINT BOLT	8
32	D034648	85620388	CORNER INNER STAMPING RH	1
33	D043307	86518214	TOW LOOP RH	1
34	D043308	86518213	TOW LOOP LH	1
35	D043687	13598576	PARK ASSIST SENSOR ISOLATOR	4
36	D045272	85620380	ANTENNA MODULE BRACKET	1
37	13500812	13500812	LICENSE PLATE LIGHT BULB	2
	*NOT SHOWN	85613268	HARNES, TT REAR BUMPER LD & HD	1



**AMERICAN EXPEDITION VEHICLES**  
**AEV-CONVERSIONS.COM (248) 926-0256**  
 51960 W. Twelve Mile Rd. Wixom, MI. 48393

DRAWN: SR    CHECKED: SR    DATE:

**ASSEMBLY, T1 HD RR BMPR, SHIPPABLE**

P/N: **ATHB0041AM-24**

**PROPRIETARY AND CONFIDENTIAL**  
 THIS DOCUMENT CONTAINS PROPRIETARY INFORMATION WHICH SHALL NOT BE REPRODUCED, TRANSFERRED TO OTHER DOCUMENTS, DISCLOSED TO OTHERS, USED FOR MANUFACTURING, OR ANY OTHER PURPOSE WITHOUT PRIOR WRITTEN PERMISSION FROM AMERICAN EXPEDITION VEHICLES.

**DO NOT SCALE DRAWING**  
 UNLESS OTHERWISE SPECIFIED  
 DIMENSIONS ARE IN MILLIMETERS.  
 TOLERANCES ARE:

LINEAR    ANGLE  
 .X ± 1.50mm    None ± 2.5°  
 .XX ± 0.75mm    .X ± 1.0°  
 .XXX ± 0.25mm    .XX ± 0.25°

MAT'L: SEE PART DRAWINGS

FINISH: SEE PART DRAWINGS

WEIGHT: 92.41 lbs

SIZE B

SCALE 1:8

SHEET 2 OF 8

ATHB0041AM24

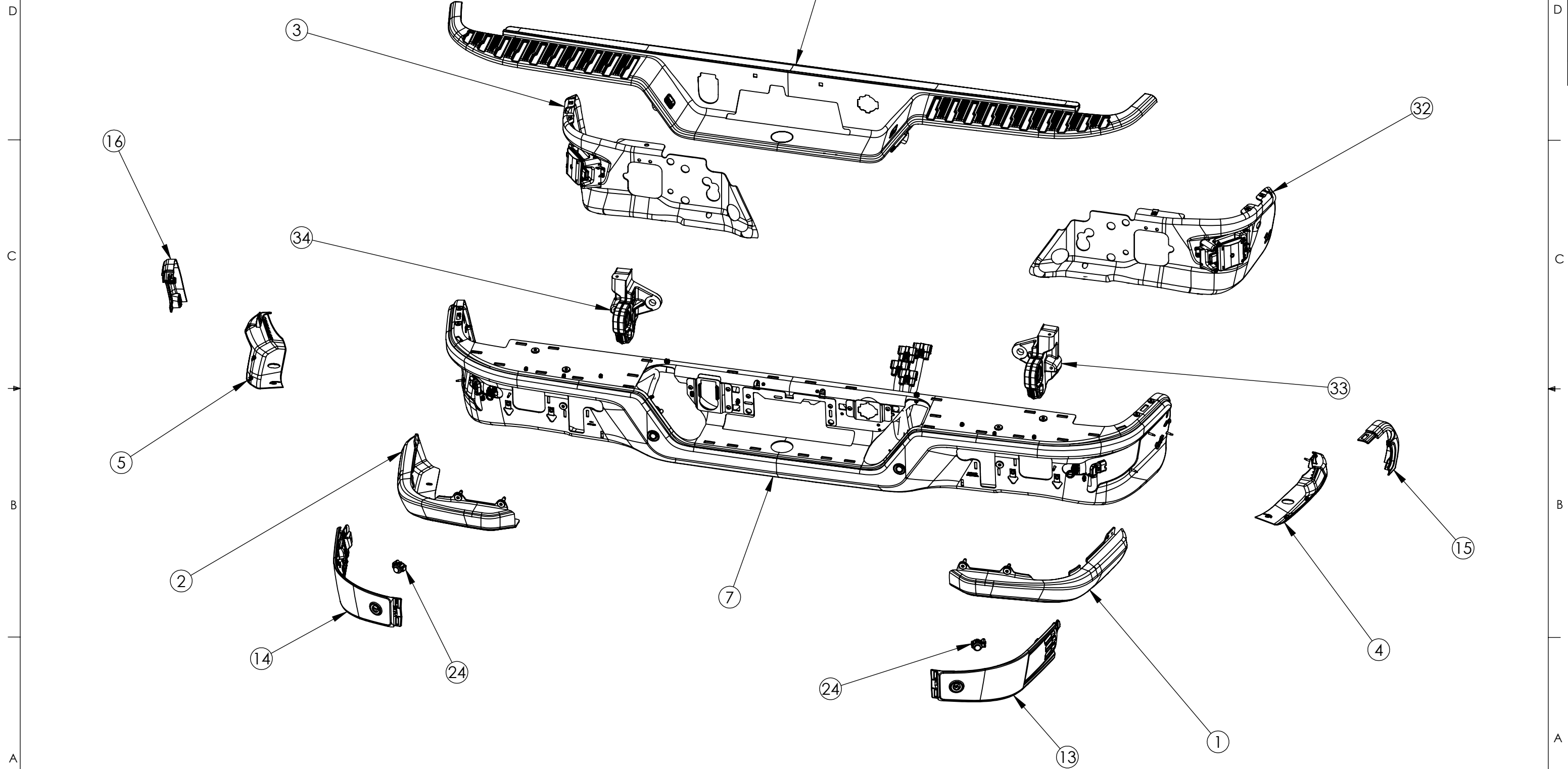
B

C

B

A

8 7 6 5 4 3 2 1



B ATHB0041AM24



**AMERICAN EXPEDITION VEHICLES**  
**AEV-CONVERSIONS.COM (248) 926-0256**  
 51960 W. Twelve Mile Rd. Wixom, MI. 48393

DRAWN: SR | CHECKED: SR | DATE:

**PROPRIETARY AND CONFIDENTIAL**  
 THIS DOCUMENT CONTAINS PROPRIETARY INFORMATION WHICH SHALL NOT BE REPRODUCED, TRANSFERRED TO OTHER DOCUMENTS, DISCLOSED TO OTHERS, USED FOR MANUFACTURING, OR ANY OTHER PURPOSE WITHOUT PRIOR WRITTEN PERMISSION FROM AMERICAN EXPEDITION VEHICLES.

**ASSEMBLY, T1 HD RR BMPR, SHIPPABLE**

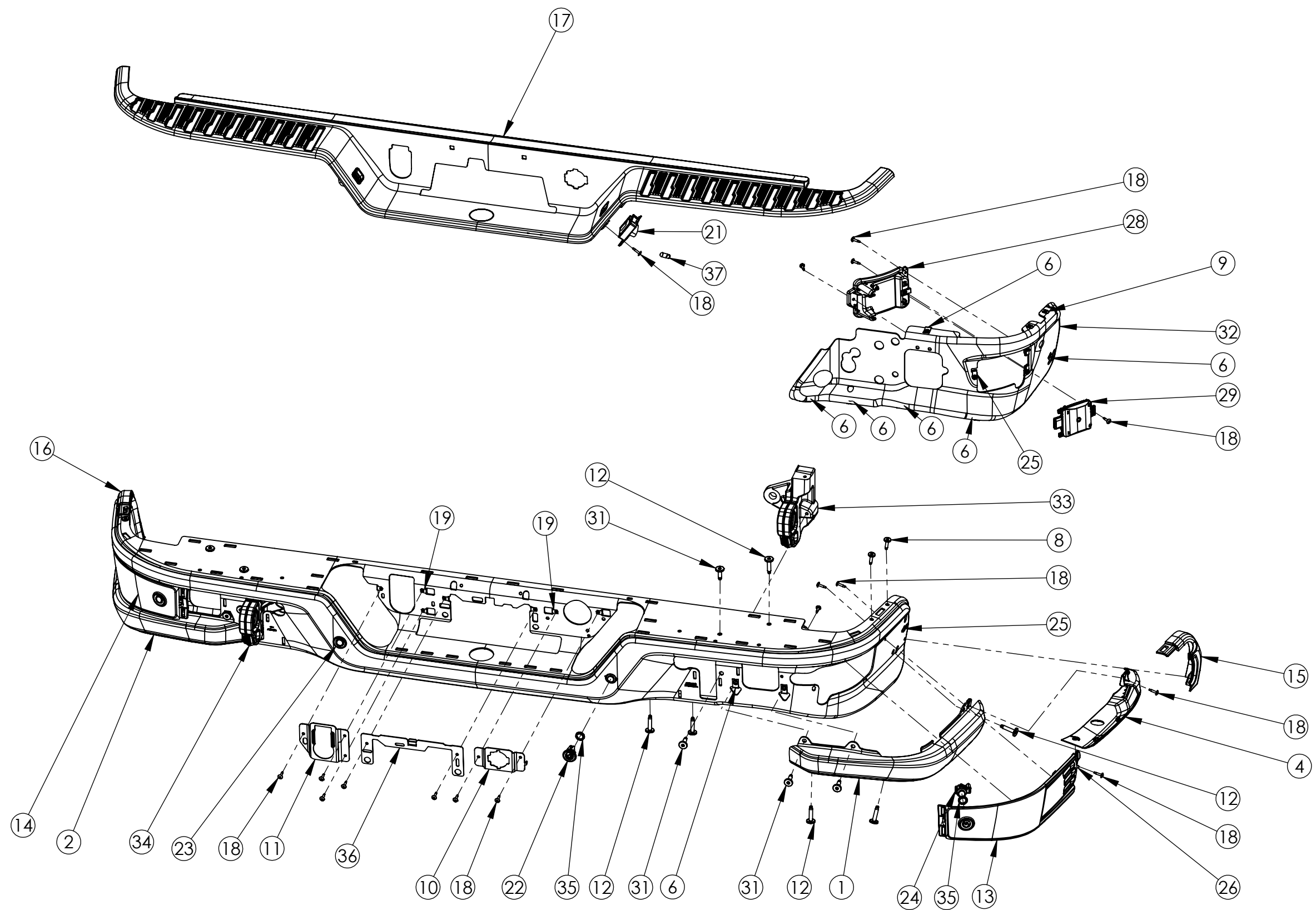
**DO NOT SCALE DRAWING**  
 UNLESS OTHERWISE SPECIFIED  
 DIMENSIONS ARE IN MILLIMETERS.  
 TOLERANCES ARE:

LINEAR	ANGLE
.X ± 1.50mm	None ± 2.5°
.XX ± 0.75mm	.X ± 1.0°
.XXX ± 0.25mm	.XX ± 0.25°

P/N: **ATHB0041AM-24**

MAT'L: SEE PART DRAWINGS  
 FINISH: SEE PART DRAWINGS  
 WEIGHT: 92.41 lbs | SIZE B | SCALE 1:10 | SHEET 3 OF 8

8 7 6 5 4 3 2 1



**AMERICAN EXPEDITION VEHICLES**  
**AEV-CONVERSIONS.COM (248) 926-0256**  
 51960 W. Twelve Mile Rd. Wixom, MI. 48393

DRAWN: SR | CHECKED: SR | DATE:

**ASSEMBLY, T1 HD RR BMPR, SHIPPABLE**

P/N: **ATHB0041AM-24**

**PROPRIETARY AND CONFIDENTIAL**  
 THIS DOCUMENT CONTAINS PROPRIETARY INFORMATION WHICH SHALL NOT BE REPRODUCED, TRANSFERRED TO OTHER DOCUMENTS, DISCLOSED TO OTHERS, USED FOR MANUFACTURING, OR ANY OTHER PURPOSE WITHOUT PRIOR WRITTEN PERMISSION FROM AMERICAN EXPEDITION VEHICLES.

**DO NOT SCALE DRAWING**  
 UNLESS OTHERWISE SPECIFIED  
 DIMENSIONS ARE IN MILLIMETERS.  
 TOLERANCES ARE:

LINEAR ANGLE  
 .X ± 1.50mm None ± 2.5°  
 .XX ± 0.75mm .X ± 1.0°  
 .XXX ± 0.25mm .XX ± 0.25°

MAT'L: SEE PART DRAWINGS  
 FINISH: SEE PART DRAWINGS  
 WEIGHT: 92.41 lbs | SIZE B | SCALE 1:10 | SHEET 4 OF 8

This page intentionally left blank

D  
C  
B  
A

D  
C  
B  
A

B ATHB0040AN23

ITEM NO.	PartNo	DESCRIPTION	QTY.
1	85043597	SHIPPABLE HD REAR BUMPER	1
2	87843054	RH PENCIL BRACE RH	1
3	87843057	RH PENCIL BRACE LH	1
4	85081770	RH INNER BEZEL	1
5	85081769	LH INNER BEZEL	1
6	13526856	TRAILER CONNECTOR ASSEMBLY	1
7	84304677	SPARE TIRE WINCH COVER	1
8	11519388	M8 X 1.25 X 25 HEX SCREW AND WASHER	2
9	11546463	M12 X 1.75 HEX NUT AND WASHER ASM	6
10	11546368	M14 X 2.0 HEX FLANGE NUT PREVAILING TORQUE	2
11	11519389	M8 X 1.25 X 30 HEX SCREW AND WASHER ASM	2



**AMERICAN EXPEDITION VEHICLES**  
**AEV-CONVERSIONS.COM (248) 926-0256**  
 51960 W. Twelve Mile Rd. Wixom, MI. 48393

DRAWN: SR    CHECKED: SR    DATE:

**ASSEMBLY, T1 HD RR BMPR, MASTER**

P/N: **ATHB0040AN-23**

**PROPRIETARY AND CONFIDENTIAL**  
 THIS DOCUMENT CONTAINS PROPRIETARY INFORMATION WHICH SHALL NOT BE REPRODUCED, TRANSFERRED TO OTHER DOCUMENTS, DISCLOSED TO OTHERS, USED FOR MANUFACTURING, OR ANY OTHER PURPOSE WITHOUT PRIOR WRITTEN PERMISSION FROM AMERICAN EXPEDITION VEHICLES.

**DO NOT SCALE DRAWING**  
 UNLESS OTHERWISE SPECIFIED .X ± 1.50mm None ± 2.5°  
 DIMENSIONS ARE IN MILLIMETERS. .XX ± 0.75mm .X ± 1.0°  
 TOLERANCES ARE: .XXX ± 0.25mm .XX ± 0.25°

MAT'L: SEE PART DRAWINGS

FINISH: N/A

WEIGHT: 102.70 lbs

SIZE B

SCALE 1:8

SHEET 2 OF 4

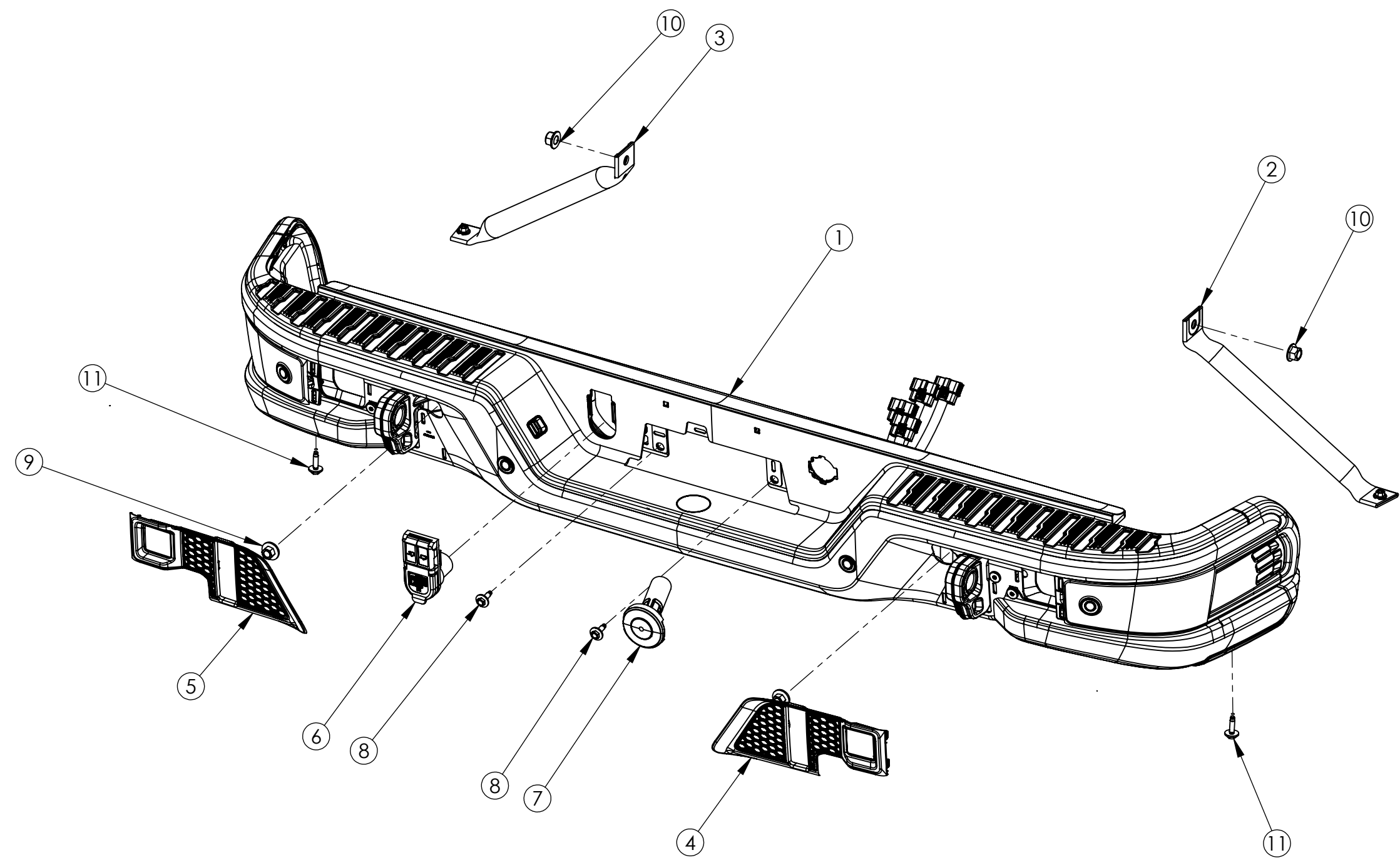


8 7 6 5 4 3 2 1

D  
C  
B  
A

D  
C  
B  
A

B ATHB0040AN23



**AMERICAN EXPEDITION VEHICLES**  
**AEV-CONVERSIONS.COM (248) 926-0256**  
 51960 W. Twelve Mile Rd. Wixom, MI. 48393

DRAWN: SR | CHECKED: SR | DATE:

**ASSEMBLY, T1 HD RR BMPR, MASTER**

P/N: **ATHB0040AN-23**

**PROPRIETARY AND CONFIDENTIAL**  
 THIS DOCUMENT CONTAINS PROPRIETARY INFORMATION WHICH SHALL NOT BE REPRODUCED, TRANSFERRED TO OTHER DOCUMENTS, DISCLOSED TO OTHERS, USED FOR MANUFACTURING, OR ANY OTHER PURPOSE WITHOUT PRIOR WRITTEN PERMISSION FROM AMERICAN EXPEDITION VEHICLES.

**DO NOT SCALE DRAWING**  
 UNLESS OTHERWISE SPECIFIED  
 DIMENSIONS ARE IN MILLIMETERS.  
 TOLERANCES ARE:

LINEAR .X ± 1.50mm  
 .XX ± 0.75mm  
 .XXX ± 0.25mm  
 ANGLE None ± 2.5°  
 .X ± 1.0°  
 .XX ± 0.25°  
 MAT'L: SEE PART DRAWINGS  
 FINISH: N/A

WEIGHT: 102.70 lbs

SIZE B | SCALE 1:8 | SHEET 3 OF 4

8 7 6 5 4 3 2 1

This page intentionally left blank

ITEM NO.	PartNo	DESCRIPTION	QTY.
1	87843024	REAR BUMPER CORNER LOWE OUTER RH STAMPING	1
2	87843025	REAR BUMPER CORNER LOWE OUTER LH STAMPING	1
3	85620388	REAR CORNER INNER STAMPING LH	1
4	86518212	LOWER CORNER END CAP RH	1
5	86518211	LOWER CORNER END CAP LH	1
6	11548587	M8 X 1.25 U-NUT	16
7	86518210	CENTER OUTER STAMPING	1
8	11601916	BOLT SCREW	4
9	11547582	PUSH IN NUT	4
10	87843030	SPARE TIRE WINCH CAP BRACKET	1
11	86518208	TRAILER CONNECTOR BRACKET	1
12	11604697	(87843052) BOLT, FHCS, M8 X 1.25 X 37	12
13	85620385	RH CORNER BEZEL	1
14	85620384	LH CORNER BEZEL	1
15	87843033	UPR CORNER END CAP RH	1
16	87843034	UPR CORNER END CAP LH	1
17	87843032	TOP CAP	1
18	11611883	M4.2 X 1.41 X 20 TORX PAN HEAD SCREW (BR POINT, T15)	29
19	11548579	M4.2 X 1.41 U-NUT (PANEL THICKNESS 2.0-3.0)	7

ITEM NO.	PartNo	DESCRIPTION	QTY.	
20	23251664	LICENSE LAMP ASSEMBLY	1	
21	23251665	LICENSE LAMP ASSEMBLY	1	
22	87843047	RPA BEZEL RH	1	
23	87843048	RPA BEZEL LH	1	
24	42707016	AXIAL SENSOR	4	
25	11548580	M4.2 X 1.41 U-NUT	12	
26	11548270	BOLT SCREW	2	
27	87843038	SBZA BRACKET LH	1	
28	87843037	SBZA BRACKET RH	1	
29	85569655	MODULE ASM - SIDE OBJECT SENSING ALERT RH	1	
30	85569654	MODULE ASM - SIDE OBJECT SENSING ALERT LH	1	
31	11601915	M8 X 1.25 X 27 T40 FLAT HD MPOINT BOLT	8	
32	85620389	CORNER INNER STAMPINGRH	1	
33	86518214	RH TOW LOOP	1	
34	86518213	LH TOW LOOP	1	
35	13598576	PARK ASSIST SENSOR ISOLATOR	4	
36	85620380	ANTENNA MODULE BRACKET	1	
37	13500812	LICENSE PLATE LIGHT BULB	2	
	*NOT SHOWN	85613268	HARNES, T1 REAR BUMPER LD & HD	1



**AMERICAN EXPEDITION VEHICLES**  
**AEV-CONVERSIONS.COM (248) 926-0256**  
 51960 W. Twelve Mile Rd. Wixom, MI. 48393

DRAWN: SR CHECKED: SR DATE:

**ASSEMBLY, T1 HD RR BMPR, SHIPPABLE**

P/N: **ATHB0041AL-23**

**PROPRIETARY AND CONFIDENTIAL**  
 THIS DOCUMENT CONTAINS PROPRIETARY INFORMATION WHICH SHALL NOT BE REPRODUCED, TRANSFERRED TO OTHER DOCUMENTS, DISCLOSED TO OTHERS, USED FOR MANUFACTURING, OR ANY OTHER PURPOSE WITHOUT PRIOR WRITTEN PERMISSION FROM AMERICAN EXPEDITION VEHICLES.

**DO NOT SCALE DRAWING**  
 UNLESS OTHERWISE SPECIFIED DIMENSIONS ARE IN MILLIMETERS. TOLERANCES ARE:  
 .X ± 1.50mm None ± 2.5°  
 .XX ± 0.75mm .X ± 1.0°  
 .XXX ± 0.25mm .XX ± 0.25°

MAT'L: SEE PART DRAWINGS

FINISH: SEE PART DRAWINGS

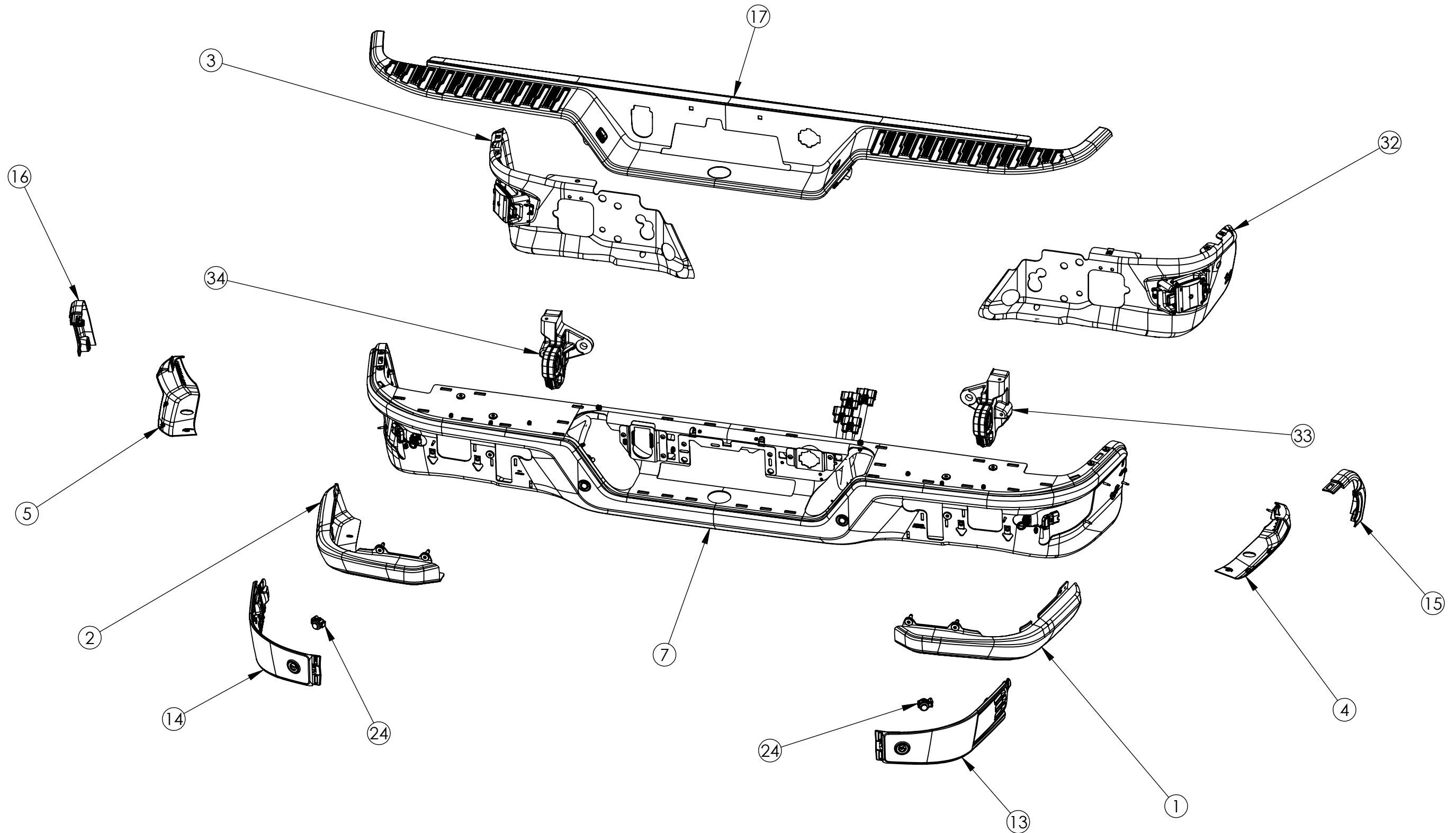
WEIGHT: 91.83 lbs

SIZE B SCALE 1:8 SHEET 2 OF 8

8 7 6 5 4 3 2 1

D  
C  
B  
A

B ATHB0041AL22



**AMERICAN EXPEDITION VEHICLES**  
**AEV-CONVERSIONS.COM (248) 926-0256**  
 51960 W. Twelve Mile Rd. Wixom, MI. 48393

DRAWN: SR | CHECKED: SR | DATE:

**PROPRIETARY AND CONFIDENTIAL**  
 THIS DOCUMENT CONTAINS PROPRIETARY INFORMATION WHICH SHALL NOT BE REPRODUCED, TRANSFERRED TO OTHER DOCUMENTS, DISCLOSED TO OTHERS, USED FOR MANUFACTURING, OR ANY OTHER PURPOSE WITHOUT PRIOR WRITTEN PERMISSION FROM AMERICAN EXPEDITION VEHICLES.

**DO NOT SCALE DRAWING**  
 UNLESS OTHERWISE SPECIFIED  
 DIMENSIONS ARE IN MILLIMETERS.  
 TOLERANCES ARE:

LINEAR	ANGLE
.X ± 1.50mm	None ± 2.5°
.XX ± 0.75mm	.X ± 1.0°
.XXX ± 0.25mm	.XX ± 0.25°

**ASSEMBLY, T1 HD RR BMPR, SHIPPABLE**

MAT'L: SEE PART DRAWINGS  
 FINISH: SEE PART DRAWINGS

P/N:ATHB0041AL-23

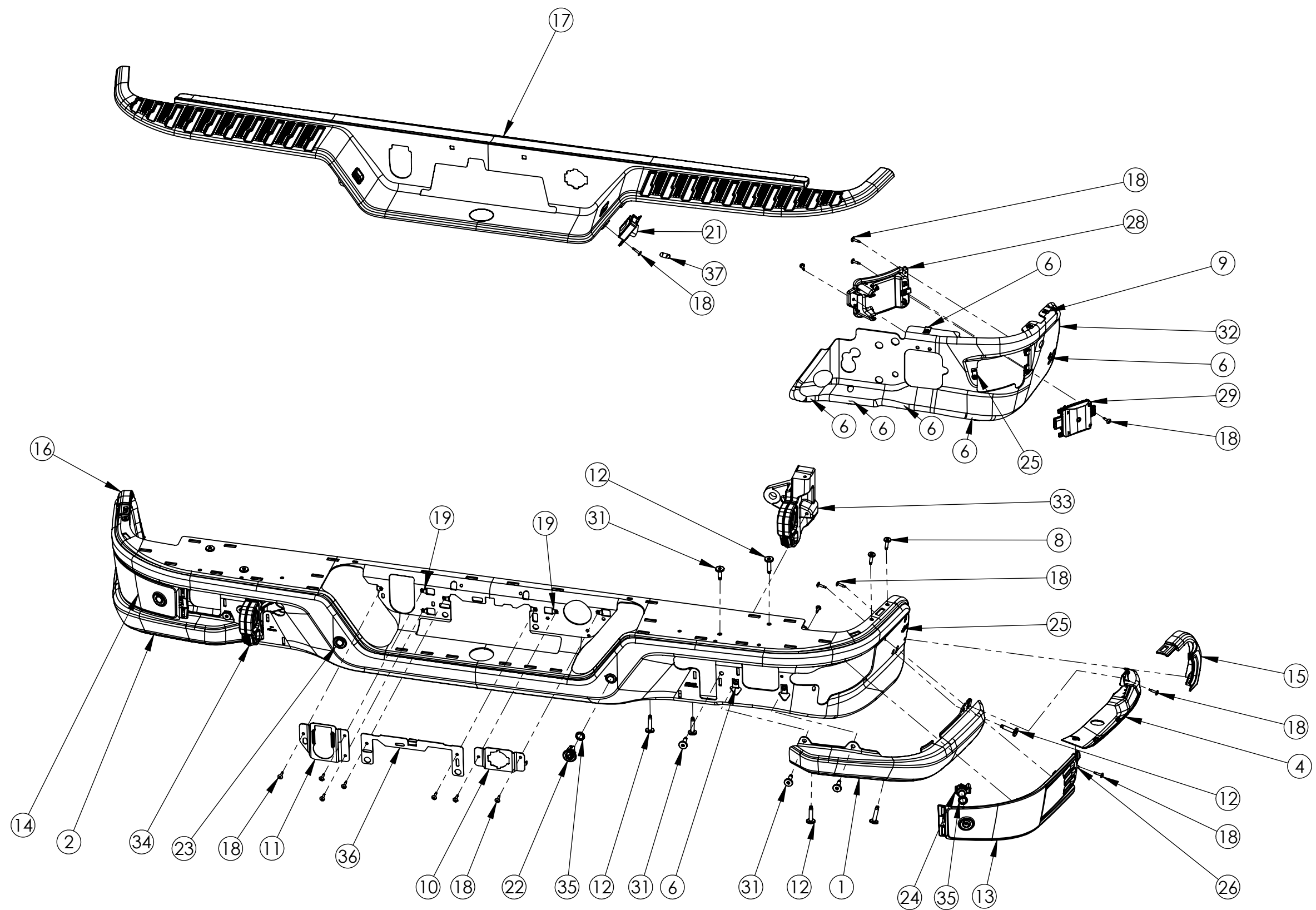
WEIGHT: 91.83 lbs

SIZE B

SCALE 1:10

SHEET 3 OF 8

8 7 6 5 4 3 2 1



**AMERICAN EXPEDITION VEHICLES**  
**AEV-CONVERSIONS.COM (248) 926-0256**  
 51960 W. Twelve Mile Rd. Wixom, MI. 48393

DRAWN: SR | CHECKED: SR | DATE:

**ASSEMBLY, T1 HD RR BMPR, SHIPPABLE**

P/N: **ATHB0041AL-23**

**PROPRIETARY AND CONFIDENTIAL**  
 THIS DOCUMENT CONTAINS PROPRIETARY INFORMATION WHICH SHALL NOT BE REPRODUCED, TRANSFERRED TO OTHER DOCUMENTS, DISCLOSED TO OTHERS, USED FOR MANUFACTURING, OR ANY OTHER PURPOSE WITHOUT PRIOR WRITTEN PERMISSION FROM AMERICAN EXPEDITION VEHICLES.

**DO NOT SCALE DRAWING**  
 UNLESS OTHERWISE SPECIFIED  
 DIMENSIONS ARE IN MILLIMETERS.  
 TOLERANCES ARE:

LINEAR ANGLE  
 .X ± 1.50mm None ± 2.5°  
 .XX ± 0.75mm .X ± 1.0°  
 .XXX ± 0.25mm .XX ± 0.25°

MAT'L: SEE PART DRAWINGS  
 FINISH: SEE PART DRAWINGS  
 WEIGHT: 91.83 lbs | SIZE B | SCALE 1:10 | SHEET 4 OF 8