



# HIGH LIFT JACK MOUNT

## FOR 2018+ JEEP WRANGLER JL

### NEW PRODUCT

Please visit [www.aev-conversions.com](http://www.aev-conversions.com) to view the most current installation guide for this product.

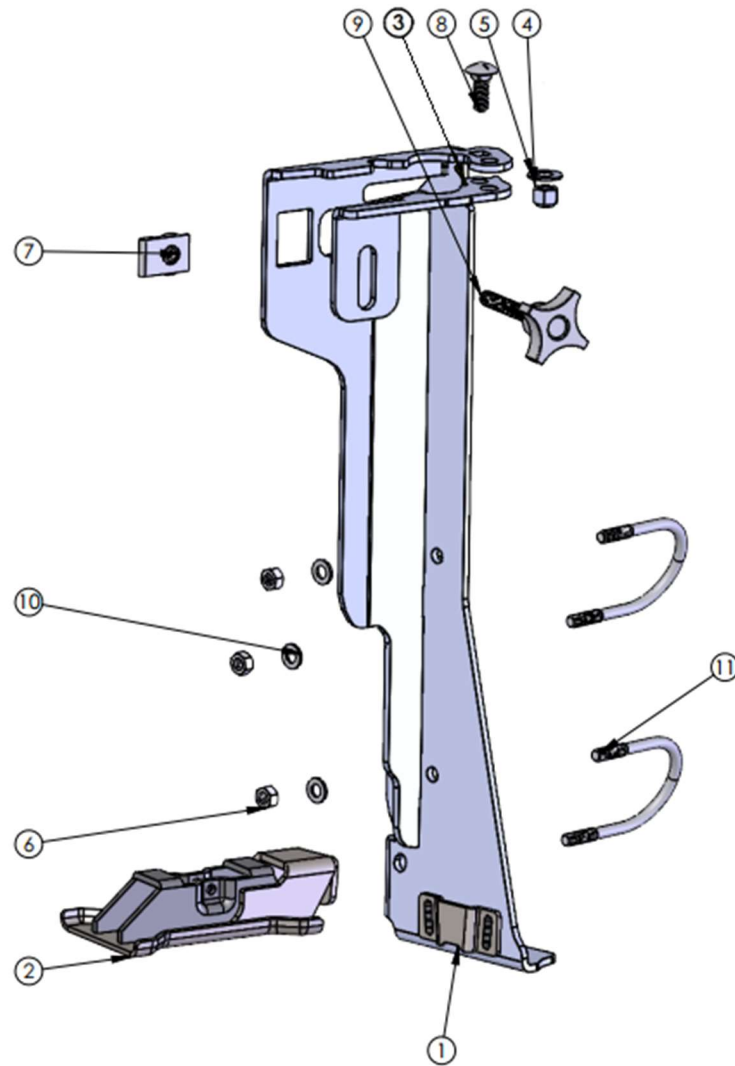
This is a new product and we want to make sure that you receive the latest and most accurate information based on customer feedback, product revisions, and/or model year updates. We value customer feedback, so we encourage you to contact our Technical Support department if you have any suggestions on how to make the installation of this product easier or if you have any questions regarding the installation of this product. AEV's Technical Support can be reached by email at [tech@aev-conversions.com](mailto:tech@aev-conversions.com) or by giving us a call at (248)-926-0256.



**PLEASE READ BEFORE YOU START**

To guarantee a quality installation, we recommend reading these instructions thoroughly before beginning any work. These instructions assume a certain amount of mechanical ability and are not written nor intended for someone not familiar with auto repair.

<b>INCLUDED PARTS</b>	<b>QTY</b>	<b>REQUIRED TOOLS</b>
Accessory Mount Weldment (AJLB0300AA)	1	Common Hand Tools
Foot Plate Weldment (AJKZ0107AA)	1	
Accessory Mount Clamp (AJLB3000AA)	1	
Accessory Mount Hardware Pack	1	



ITEM NO.	PartNo	DESCRIPTION	QTY.
1	AJLB0300AA	WELDMENT, JL TIRE CARRIER, ACCESSORY MOUNT	1
2	AJKZ0107AA	FOOT PLATE WELDMENT, JK ACCESSORY RACK	1
3	AJLB3000AA	BRACKET, JL TIRE CARRIER, ACCESSORY MOUNT CLAMP	1
4	AEV98051AA	3/8" - 16 NYLON LOCK NUT	1
5	AEV98049AA	3/8" SS WASHER 0.875" x 0.406"	1
6	AEV93024AA	5/16"-18 STEEL HEX NUT GRADE 5	4
7	P-AVO10054BE	3/8" CLIP-ON BARREL NUT 0.75" FROM HOLE TO CENTER	1
8	NTH90084	3/8"-16 CARRIAGE BOLT GRADE 5	1
9	P-5993K59	KNOB, 4 ARM GRIP, 3/8"-16 X 2-1/2"	1
10	AEV98007AB	M8 FLAT WASHER - 91166A270	4
11	NTHHDWR5009A	5/16 -18 U-Bolt 2.25" ID	2

## I. ASSEMBLY

1. Attach Accessory Mount Clamp to Accessory Mount Weldment with 3/8" Carriage Bolt using 9/16" Wrench. 3/8" Washer and 3/8" - 16 Nylon Lock Nut as shown DO NOT OVERTIGHTEN—Bracket should swing easily.



Figure 1 (left) and 2 (right)

2. Slide U-nut onto Accessory Mount Weldment.



Figure 3

- Using the 1/2" Socket Ratchet attach Accessory Mount Weldment to tire carrier tubing with U-bolts (2) and lock nuts (4). Make sure the mount is straight/vertical as the nuts are tightened. The curved edge at the bottom of the weldment should sit flush against the tire carrier tube (*figs 6 and 7*).

Note: Begin fastening at the bottom to allow for proper alignment. Be sure to fasten the nuts evenly to equally distribute the force. **Take care to not over tighten the upper u-bolt as you may cause the upper setion to deflect and warp.**



Figures 4 (top left), 5 (top right), 6 (bottom left), and 7 (bottom right)

4. Remove cotter pin from the Hi-Lift footplate. Remove factory Hi-Lift footplate and replace with AEV Hi-Lift footplate (*fig 9*). Replace cotter pin.



Figures 8 (left) and 9 (right)

5. Lift jack onto accessory mount inserting the footplate's tab into the frame's slot (*fig 10*). Close the Accessory Mount Clamp around the Hi-Lift Jack and fasten the Hi-Lift locking stud knob (*fig 12*) sliding it through hole on jack column and tightening it securely into U-nut.

Note: The Hi-Lift Jack must be in its lowest position to prevent damage to the tail light when opening the tailgate.

