



# Fuel Tank Skid Plate

FOR Chevy Colorado/GMC Canyon  
2023 - Current

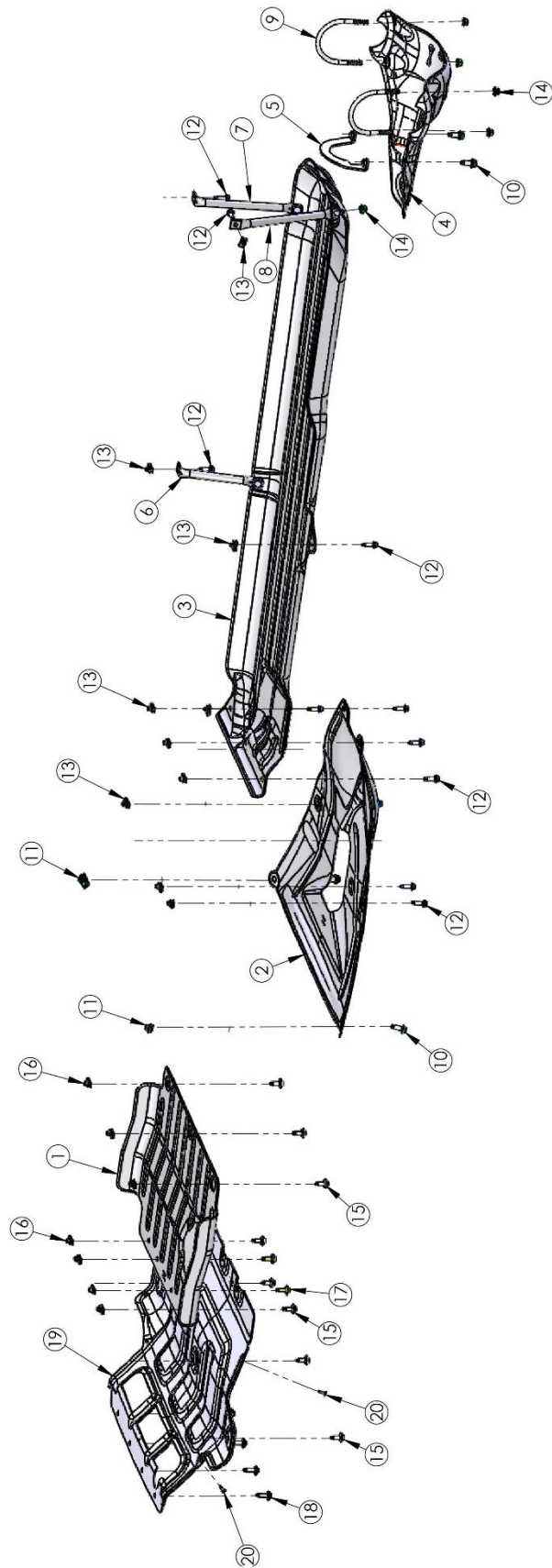
INSTALLATIONGUIDE



INCLUDED PARTS	QTY	REQUIRED TOOLS
Fuel Tank Skid Plate	1	Ratchet (1/4" and 3/8")
Hardware Pack	1	Torque Wrench
Rear Inboard Pencil Brace	1	13MM Socket, 15MM Socket
Rear Outboard Pencil Brace	1	Jack stand
Front Inboard Pencil Brace	1	9/16ths Drill Bit

**PLEASE READ BEFORE YOU START**

To guarantee a quality installation, we recommend reading these instructions thoroughly before beginning any work. These instructions assume a certain amount of mechanical ability and are not written nor intended for someone not familiar with auto repair.





ITEM NO.	PartNo	DESCRIPTION	QTY.
1	A32P1200AA	FRONT IFS SKID, STAMPING, 31XX-2 SKID PLATES	1
2	A32P1300AA	TRANSMISSION SKID, STAMPING, 31XX-2 SKID PLATES	1
3	A32P1400AA	FUEL TANK SKID, STAMPING, 31XX-2 SKID PLATES	1
4	A32P0195AB	REAR DIFF SLIDER, WELDMENT, 31XX-2 SKID PLATES	1
5	A32P0192AA	CLAMP, REAR DIFF, WELDMENT 31XX-2 SKID PLATES	1
6	A32P0142AB	PENCIL BRACE, FRT INBOARD FUEL TANK, 31XX-2 SKID PLATES	1
7	A32P0143AB	PENCIL BRACE, RR INR FUEL TANK, 31XX-2 SKID PLATES	1
8	A32P0144AB	PENCIL BRACE, RR OTR FUEL TANK, 31XX-2 SKID PLATES	1
9	A32P1953AA	U-BOLT, 31XX-2 SKID PLATES, REAR DIFF SLIDER	2
10	11588738	M10 X 1.5 X 25 HEX FLANGE BOLT	4
11	11548589	M10 X 1.5 U-NUT (PANEL THICKNESS RANGE 1.5-5.5)	2
12	11588724	M8 X 1.25 X 30 HEX FLANGE BOLT	11
13	11548587	M8 X 1.25 U-NUT	10
14	11546366	M10 X 1.5 HEX FLANGE LOCK NUT	7
15	11519388	M8 X 1.25 X 25 HEX SCREW AND WASHER	8
16	11602085	M8 X 1.25 U-NUT (PANEL THICKNESS 0.8-4.0)	7
17	11611334	M8 X 1.25 X 30 HEX SCREW AND WASHER ASM	2
18	11603624	M8 X 1.25 X 34.05 13mm HEX SOC, M-PT	4
19	A32P1100AB	RADIATOR SKID, 31XX-2 SKID PLATES	1
20	11611883	M4.2 X 1.41 X 20 TORX PAN HEAD SCREW (BR POINT, T15)	4



## I. VEHICLE PREPARATION

### 1. Notes Before Beginning

- A. If utilizing four- or two-point vehicle lift, make sure to allow space for skid plate installation on the drive side sub frame.



Figure 1

- 2. Remove factory Transmission Skid Plate and Fuel Tank Skid Plate (if applicable).
- 3. AEV Skid Plate Installation order if installing multiple skid plates:
  - A. AEV Front IFS Skid Plate, then AEV Radiator Skid Plate (Radiator Skid requires AEV front bumper).
  - B. AEV Fuel Tank Skid Plate, then AEV Transmission Skid Plate
  - C. Rear Differential Slider Skid plate (Independent)

4. Loosely install pencil braces to the Fuel Tank Skid Plate.
  - A. A32P0142AA front inboard (shorter brace with high angle)



*Figure 2*



B. A32P0143AA rear inboard (taller Brace with 90-degree angle)



*Figure 3*



C. A32P0144AA rear outboard (taller brace with minimal angle)



*Figure 4*

5. Align Fuel Tank Skid to find U-nut and rivnut locations.
  - A. Two U-nut Locations along Driver side sub frame.
  - B. Three U-nut locations along back transmission cross car frame.
  - C. Two U-Nut locations on subframe aligning with pencil braces.
  - D. Rivnut installation is located on the rear circular subframe point near the back of the fuel tank (Figure 6).
    - i None AT4X/ZR2 variants will not have this hole in the frame.
      - 1 For variants with the hole. Drill out hole slightly larger with a 9/16<sup>th</sup>s drill bit and install rivnut.





- 2 For variants without the hole. Please align pencil brace as vertically as possible and mark drill point. Drill out to 9/16ths. We would recommend starting with a smaller drill bit to pilot hole.
6. Loosely tighten all 8 M8 bolts making sure Pencil braces are as close to vertical as possible.
    - A. If installing the AEV Transmission Skid plate, on the cross car subframe location closest to the transmission, only install the bolt that is closest to the driver's side of the vehicle.
    - B. If not installing AEV Transmission Skid plate, Install all bolts.



Figure 5



*Figure 6*

7. Tighten bolts to designated FT/LBS
  - A. M8 Bolts 16 FT/LBS
  - B. M10 Nuts to 42 FT/LBS