



REAR DIFF SLIDER

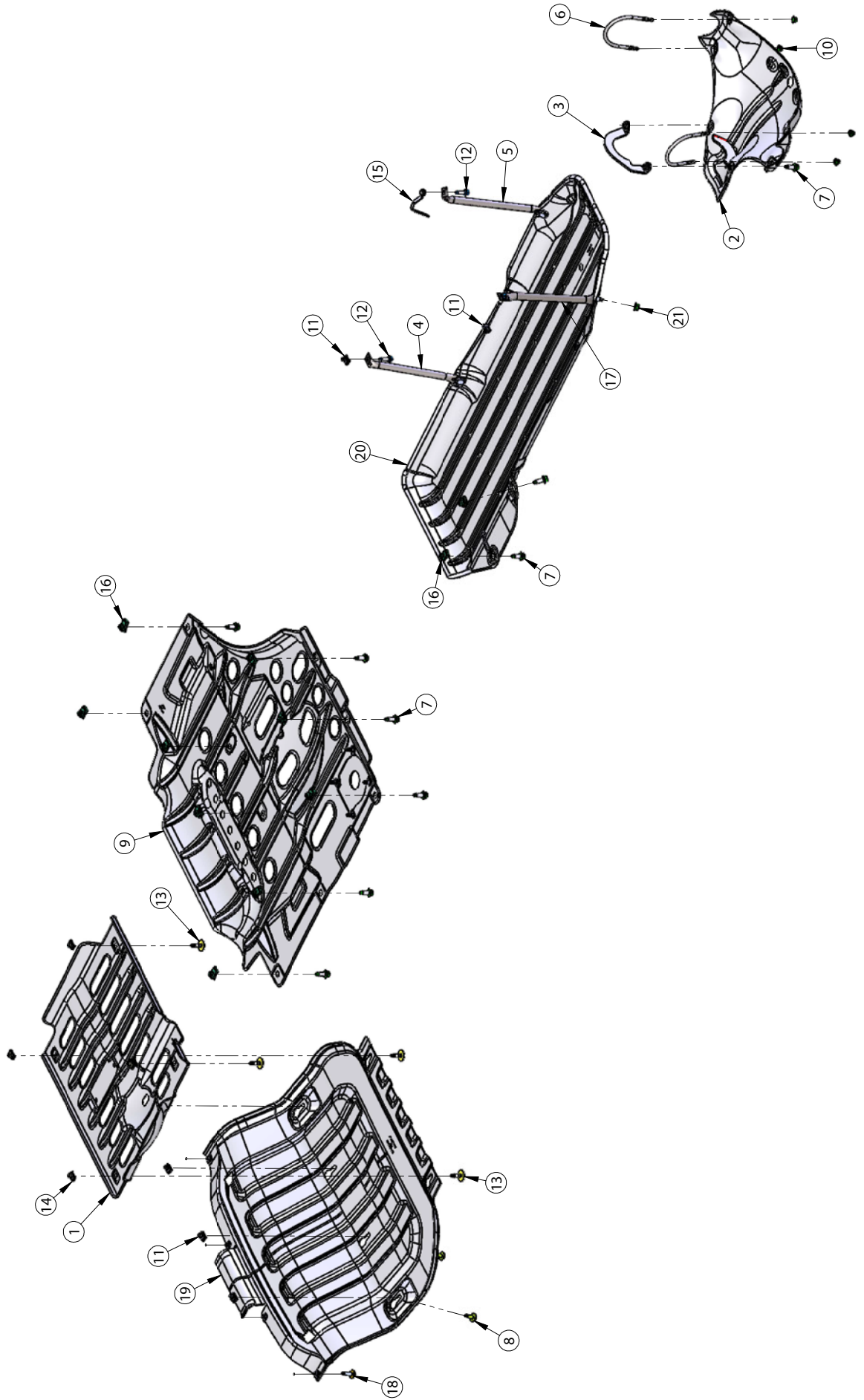
FOR GM LIGHT DUTY TRUCKS

PLEASE READ ENTIRELY BEFORE YOU START

To guarantee a quality installation, we recommend reading these instructions thoroughly before beginning any work. These instructions assume a certain amount of mechanical ability and are not written nor intended for someone not familiar with auto repair.



SKID PLATES FOR GM LIGHT DUTY TRUCKS





SKID PLATES

FOR GM LIGHT DUTY TRUCKS

ITEM NO.	PartNo	DESCRIPTION	QTY.
1	AT1P1200AA	FRONT IFS SKID, STAMPING, T1 LD SKID PLATES	1
2	AT1P0195AA	REAR DIFF SLIDER, WELDMENT, T1 LD SKID PLATES	1
3	AT1P0196AA	CLAMP, REAR DIFF, WELDMENT, T1 LD SKID PLATES	1
4	AT1P0142AA	WELDMENT, T1 LD SKID PLATES, TUBE FRT INR FUEL TANK	1
5	AT1P0147AA	WELDMENT, T1 LD SKID PLATES, TUBE RR INR FUEL TANK	1
6	AT1P1954AA	M8 U-BOLT, T1 LD SKID PLATES, REAR DIFF SLIDER	2
7	11588738	M10 X 1.5 X 25 HEX FLANGE BOLT	13
8	11611334	M8 X 1.25 X 30 HEX SCREW AND WASHER ASM	4
9	AT1P0013AA	ASSEMBLY, T1 LD SKID PLATES, T-CASE	1
10	11546377	M8 X 1.25 HEX FLANGE NUT	4
11	11548587	M8 X 1.25 U-NUT	6
12	11588724	M8 X 1.25 X 30 HEX FLANGE BOLT	2
13	11602140	M8 X 1.25 X 30 BOLT AND WASHER	4
14	11548585	M8 X 1.25 U-NUT	4
15	AT1P0141AA	WELDMENT, T1 LD SKID PLATES, RR INR FUEL TANK FLAG NUT	1
16	11546583	M10 X 1.5 U-NUT (PANEL THICKNESS RANGE 1.5-5.5)	11
17	AT1P0046AA	TUBE W/CAPTURED BOLT, RR OTR FUEL TANK, T1 LD SKID PLATES	1
18	11603624	M8 X 1.25 X 34.05 13mm HEX SOC, M-PT	4
19	AT1P0014AA	RADIATOR SKID, ASSEMBLY, T1 LD SKID PLATES	1
20	AT1P1400AA	FUEL TANK SKID, STAMPING, T1 LD SKID PLATES	1
21	11546366	M10 X 1.5 HEX FLANGE LOCK NUT	3

NOTE: Please confirm what differential your vehicle is equipped with. The AEV rear differential slider is designed to work with the AAM 9.5/9.76 axles with RPO code SU7. Please refer to the image of the proper axle





1. Put the U-Bolts around the rear differential and loosely install the M8 nuts.

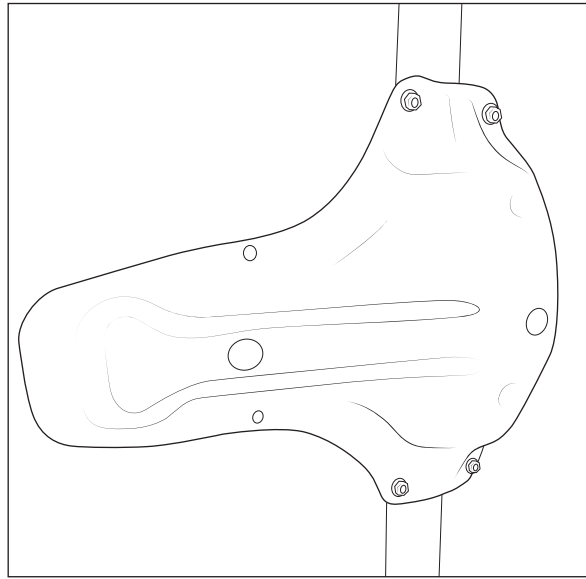


Figure 1

2. Place the clamp over the rear differential ensuring that the tabs face the rear of the vehicle

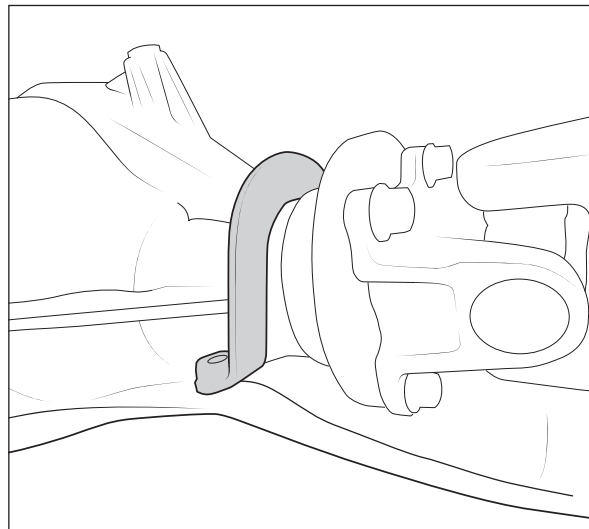


Figure 2



3. Install the two M10 bolts into the differential clamp. Tighten these to 40 ft-lbs.

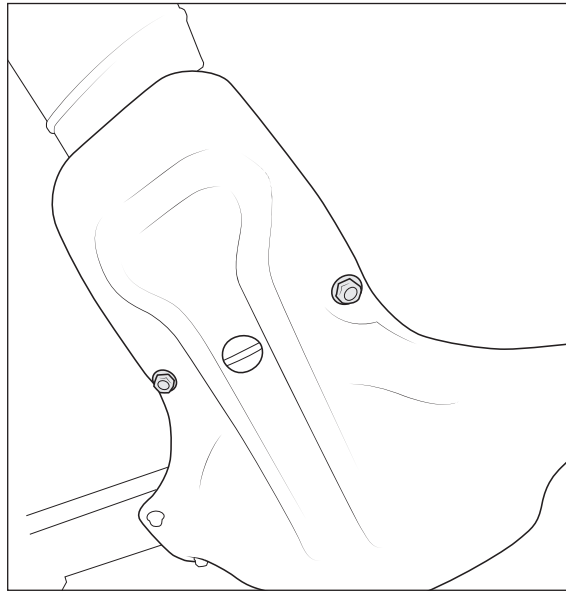


Figure 3

4. Tighten the nuts on the U-bolts to 18 ft-lbs. **NOTE:** It is important that these are torqued down equally. Please make sure that the U-Bolts have close to the same amount of thread showing after being torqued down.