



WINCH KIT

FOR RAM POWER WAGON

PLEASE READ ENTIRELY BEFORE YOU START

To guarantee a quality installation, we recommend reading these instructions thoroughly before beginning any work. These instructions assume a certain amount of mechanical ability and are not written nor intended for someone not familiar with auto repair.



I. CLOCKING THE WINCH

1. Using a T-25 remove the 5 screws from the housing box, rotate the housing box to the desired angle. In the case of interfacing with our bumper, the intended handle position is between locations 2 and 3 (fig. 1). Use the Warn logo for location reference.

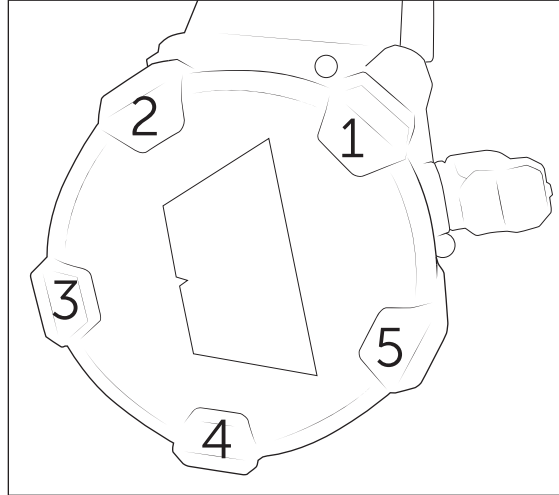


Figure 1

2. After positioning, reinstall housing screws making sure to not over torque. Replace the provided handle on the WARN winch with the one provided by AEV.

II. INSTALLING THE WINCH

1. Place the winch inside the main stamping with the WARN logo on the center of the winch facing up (fig. 2).

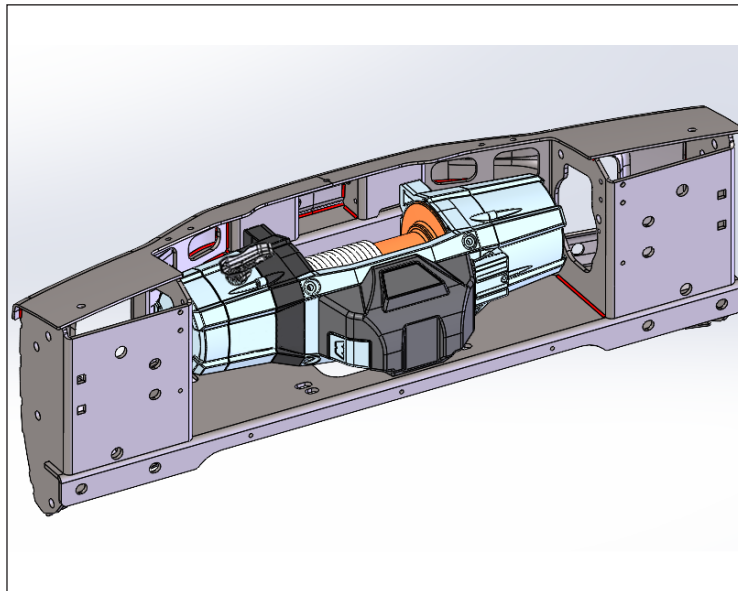


Figure 2



- Place the washers AEV98011AA between the winch and the stamping at the hole locations shown below (fig. 3 left), and the washers AEV98006AA on the other side accordingly, the WARN fairlead going before the lower washers (fig. 3 right). Then fasten the winch to the stamping.

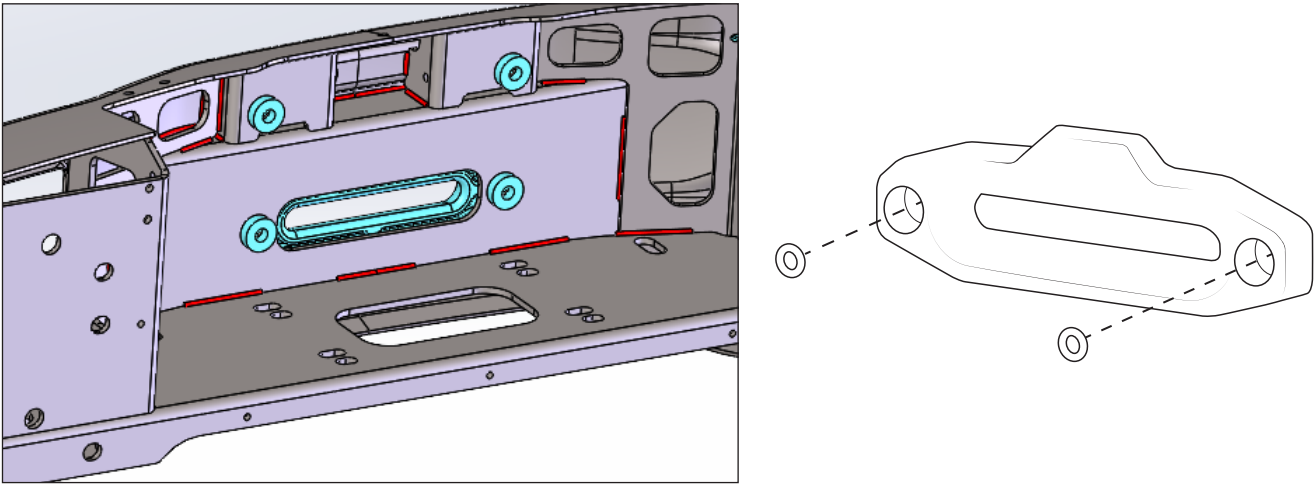
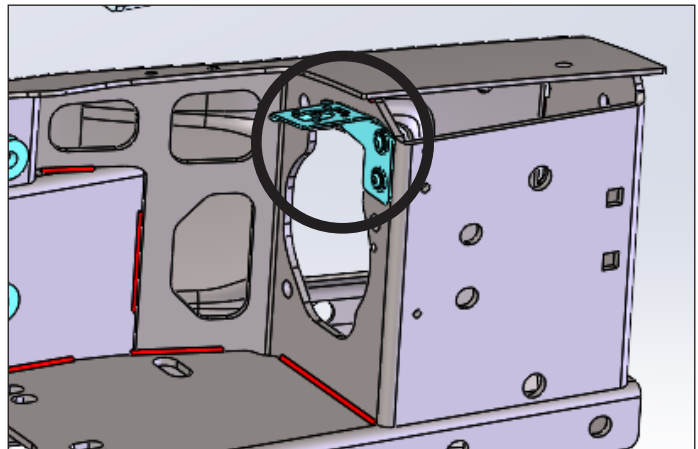
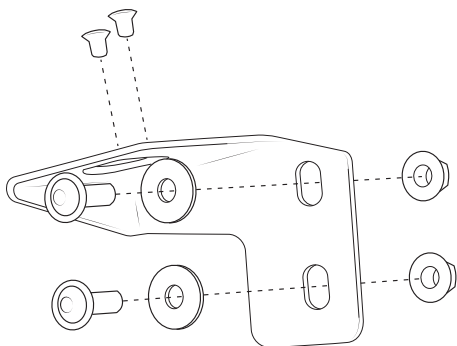
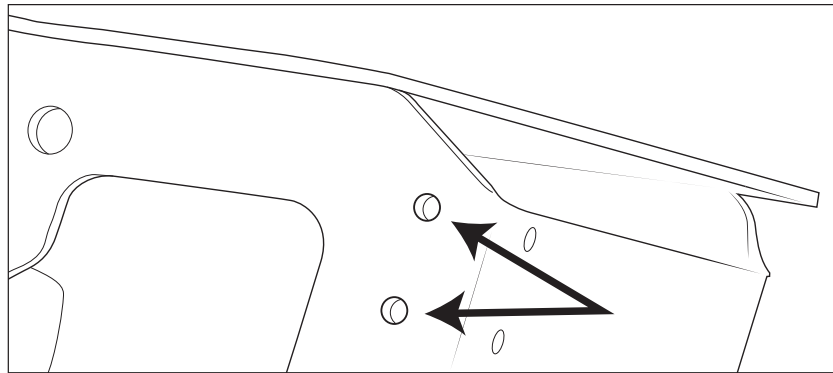


Figure 3

- Attach bracket ARMB1231AA to the inner side of the center stamping, using AEV91055AA, AEV98027AA going between the screw and the bracket and using the provided nuts (AEV93027AA).





4. Remove the winch plug from the WARN winch by removing the two screws holding it in place. Fit the plug at the desired angle and secure it to bracket ARMB1231AA using AEV91185AA.

