



# RAM HD STEP BRACKET

AMP RESEARCH MODEL P-AMP 7530601A

## **PLEASE READ ENTIRELY BEFORE YOU START**

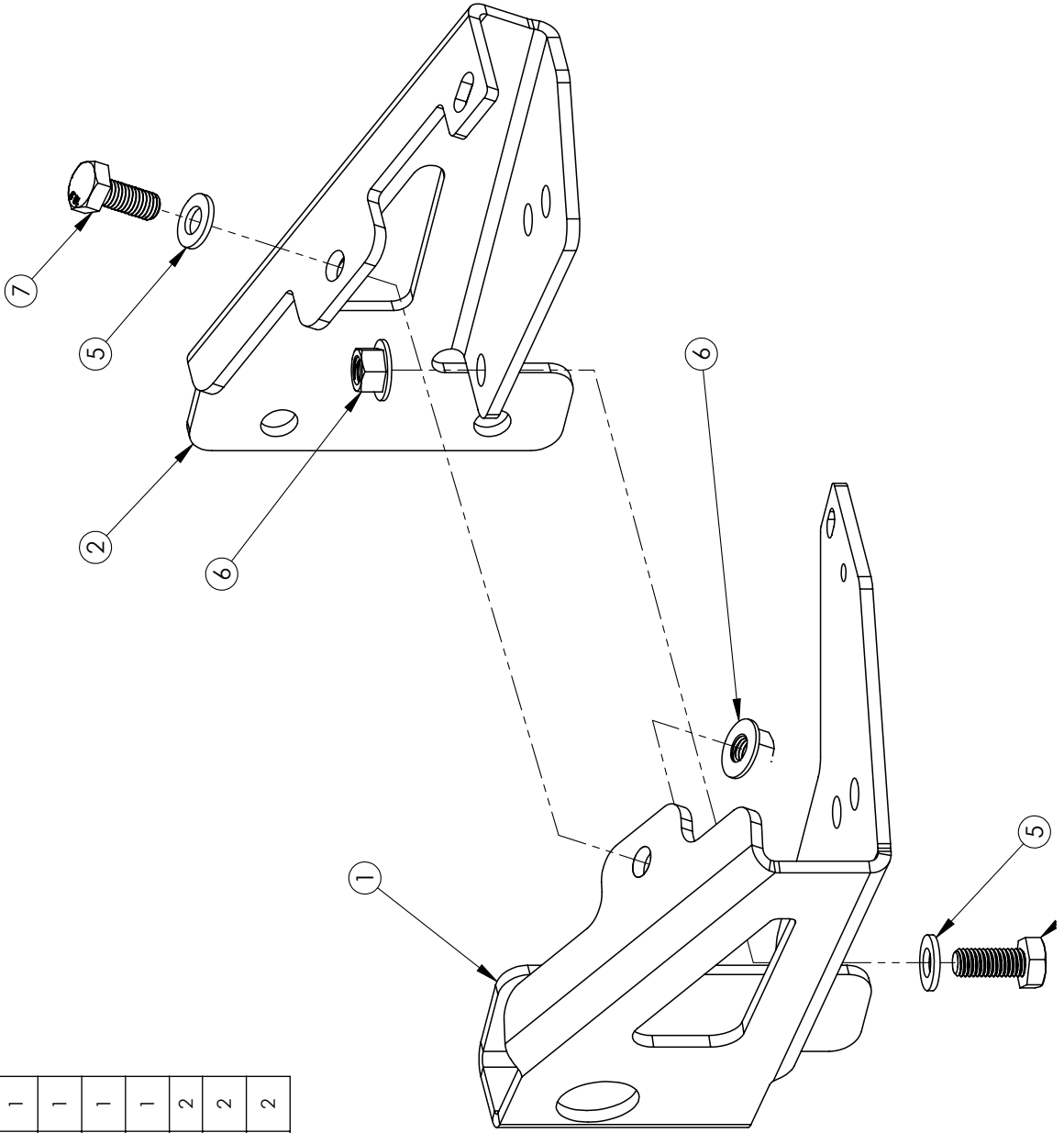
To guarantee a quality installation, we recommend reading these instructions thoroughly before beginning any work. These instructions assume a certain amount of mechanical ability and are not written nor intended for someone not familiar with auto repair.



# RAM HD STEP BRACKET

AMP RESEARCH MODEL P-AMP 7530601A

ITEM NO.	PartNo	DESCRIPTION	QTY.
1	ARMB3060AA	BRACKET, RAM 2500/3500, REAR BUMPER, AMP BED STEP, BUMPER	1
2	ARMB3061AA	BRACKET, RAM 2500/3500, REAR BUMPER, AMP BED STEP	1
3	AEV91121AA	M6 X 1.0 X 16 BUTTON HEAD FLANGED CAP SCREW	1
4	AEV93020AB	M6 X 1.0 FLANGE NUT, SERRATED PS11036	1
5	AEV98001AB	M10 FLAT WASHER - PS5873S SILVER	2
6	AEV93002AB	M10 X 1.5 FLANGE NUT NON-LOCKING (PS11036 SILVER)	2
7	AEV91025AA	M10 X 1.5 X 25 HEX HEAD SCREW CLASS 10.9 PS5873/SILVER	2





## I. Assemble Amp Step

1. Remove all components/hardware from AMP Research BedStep kit and AEV AMP Bracket kit. The Spacer Plate and two M10-1.5 x 30mm Bolts/Washers will be used from the AMP Research BedStep kit and the rest of the hardware will be supplied in the AEV AMP Bracket Kit.
2. Align Amp Step Brackets ARMB3060/3061AA in correct orientation as shown (fig. 1). Insert (1) M10-1.5 x 25mm Bolt with an M10 Washer through the hole shown (fig. 1). Secure with M10 flange nut.

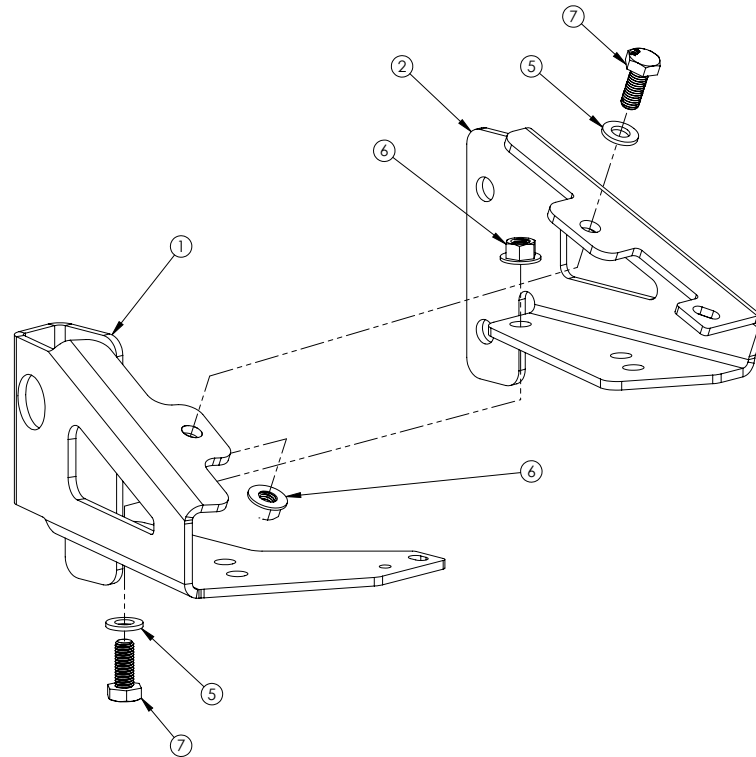


Figure 1

3. Insert an M10-1.5 x 25mm Bolt with an M10 washer through the underside of the brackets as shown. Secure with M10 flange nut.



- Align the two-hole spacer that comes with the AMP Research BedStep kit to the top holes on the amp step as shown (fig. 2). With the AEV bracket now assembled; align bracket, spacer, and amp step to the two holes. Secure bracket to the amp step with (2) M10-1.5 x 30mm Bolts and M10 washers.

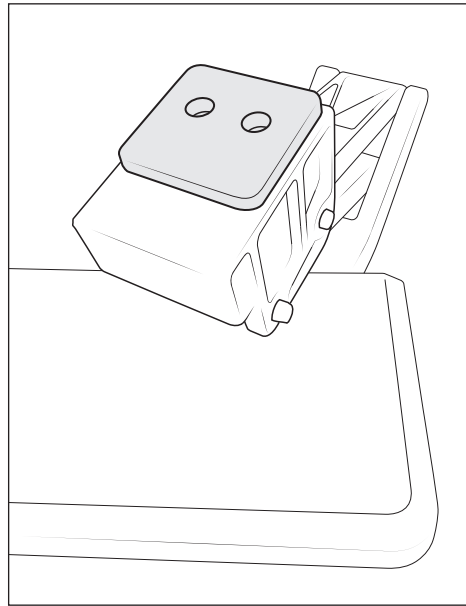


Figure 2

- Tighten all nuts and bolts to proper torque.

## II. Installation

- Locate and remove the two M10 bolts from underside of the AEV Rear Bumper (fig. 3). Set aside for later use.

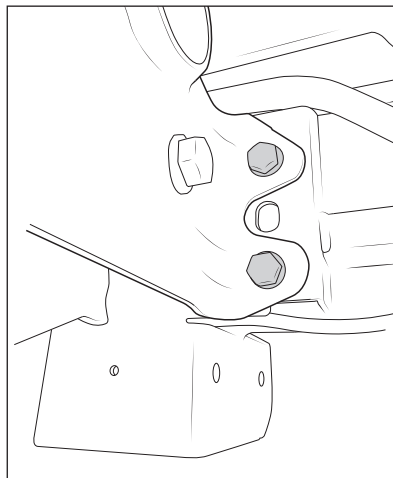


Figure 3



- Align Amp Step Pad bracket along frame holes the bolts were removed from. Use the bolts from step 1 to secure the amp step bracket to the frame of the vehicle (fig. 5)

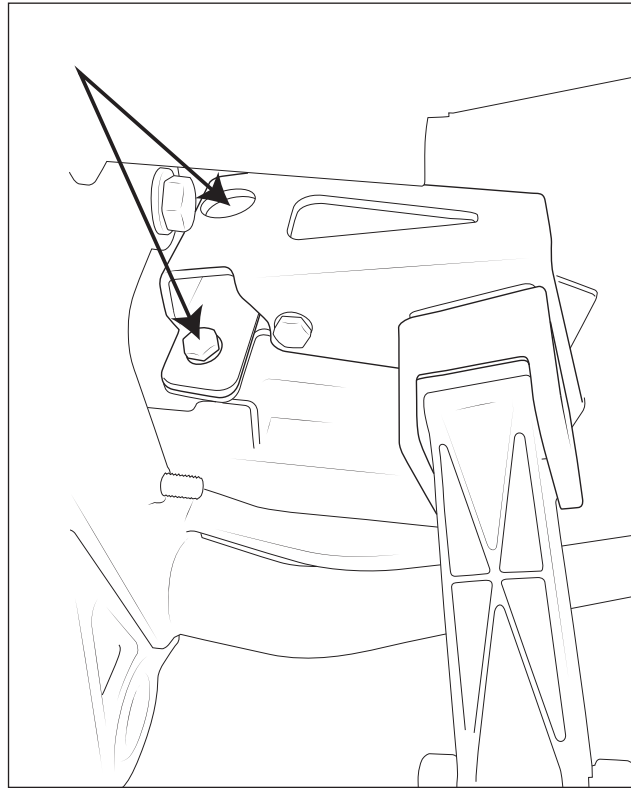


Figure 4

- Locate and install the M6 bolt and nut towards rearward underside of the frame (fig. 6)

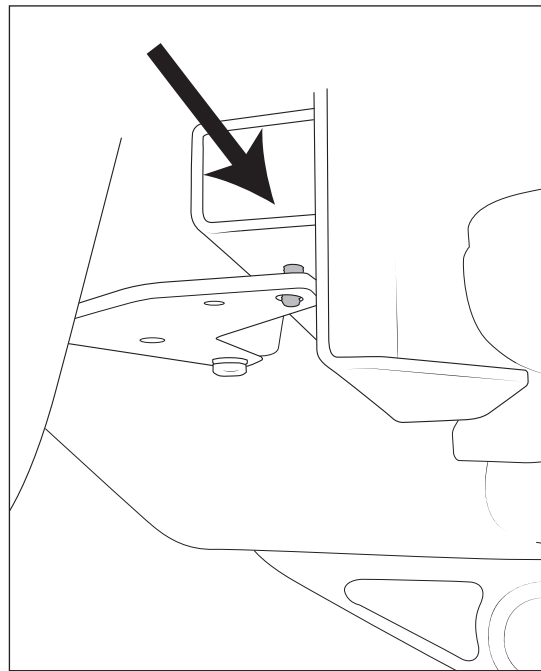


Figure 5

- Tighten all nuts and bolts to proper torque.