



# FRONT SPLASH GUARDS

FOR RAM TRUCKS WITH FACTORY FENDER FLARES

## PLEASE READ ENTIRELY BEFORE YOU START

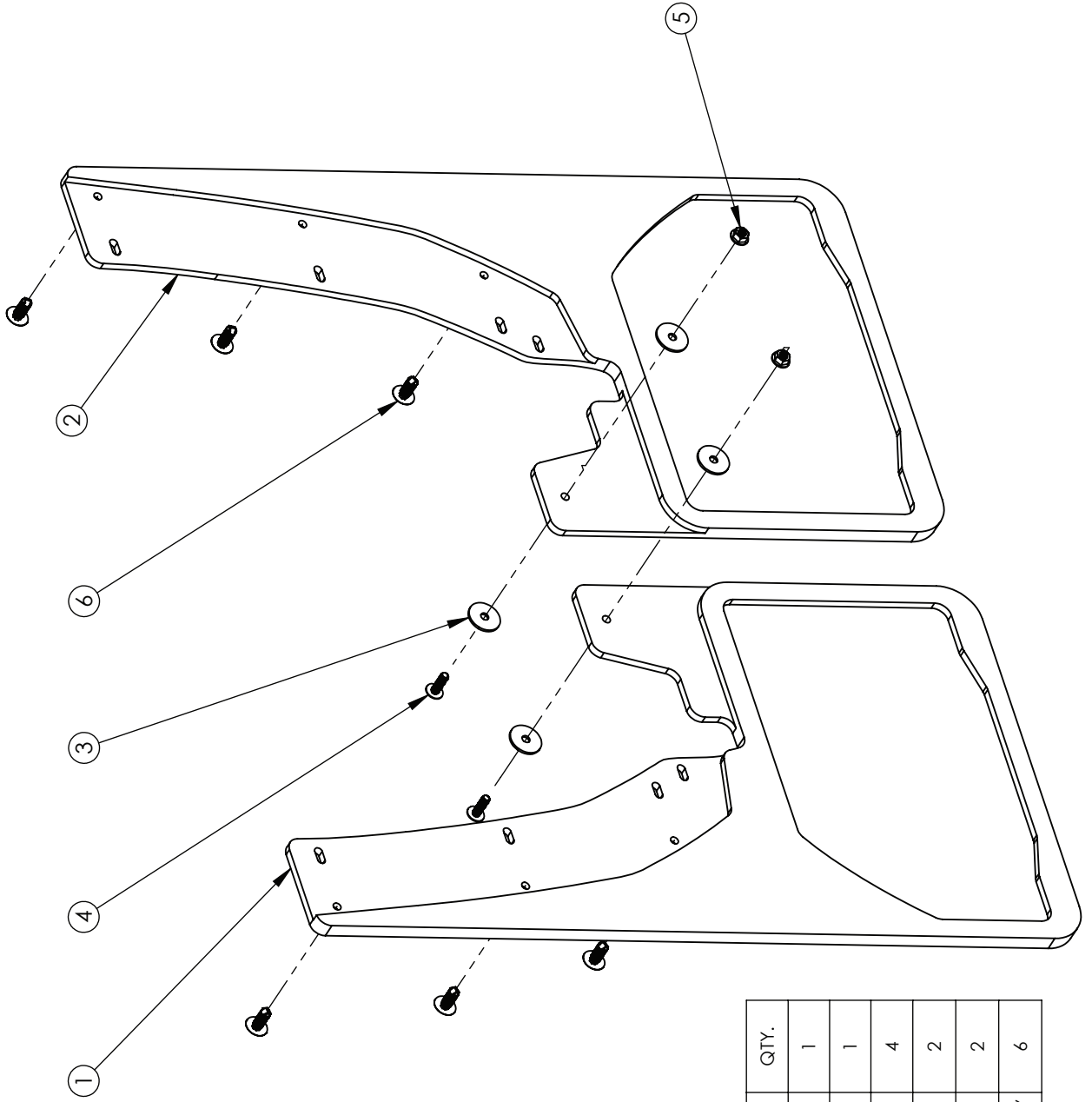
To guarantee a quality installation, we recommend reading these instructions thoroughly before beginning any work. These instructions assume a certain amount of mechanical ability and are not written nor intended for someone not familiar with auto repair.

### REQUIRED TOOLS

Automotive Lift or Jack  
Common Hand Tools  
Drill  
5/16" and 1/4" Drill Bits



# FRONT SPLASH GUARDS



ITEM NO.	PartNo	DESCRIPTION	QTY.
1	ARMZ1125AA	SPLASH GUARD, 2019 RAM, 37" FRONT LH	1
2	ARMZ1124AA	SPLASH GUARD, 2019 RAM, 37" FRONT RH	1
3	AEV98035AA	WASHER, 1/4"X1" DIA., FENDER	4
4	AEV91055AA	M6 X 1.0 X 20 BUTTON HEAD FLANGED CAP	2
5	AEV93027AA	M6 X 1.0 FLANGE NUT FREE SPINNING	2
6	P-AVO15414	CHRISTMAS TREE FASTENER, 11/16" HEAD DIA, 5/16 STEM DIA, 13/16 LENGTH	6



## I. FRONT SPLASH GUARD INSTALLATION

1. Support the vehicle by the frame until the front wheels are off the ground.
2. Remove the front wheels and tires.
3. Remove four factory bolts from the fender flare and SAVE (fig. 1).
4. Remove the plastic guards shown and discard (fig. 2).

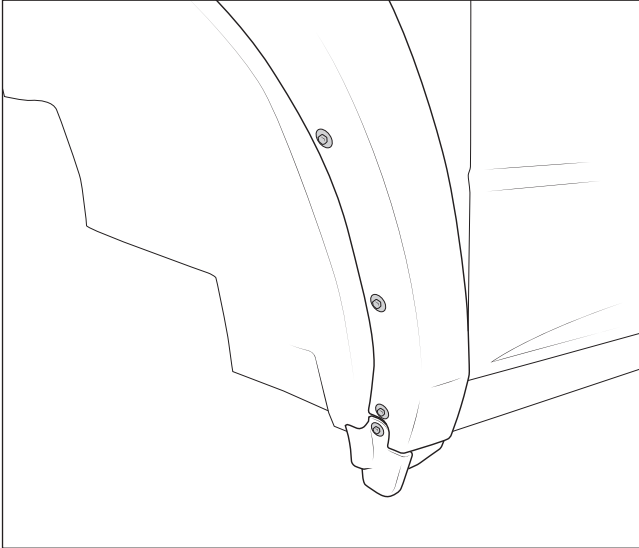


Figure 1

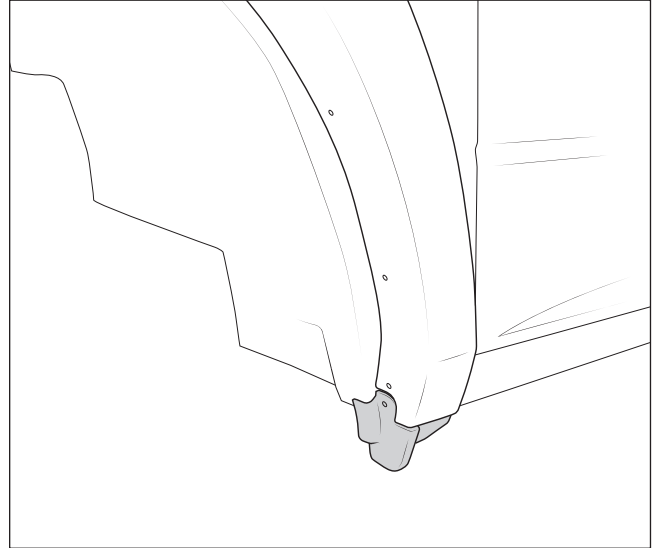


Figure 2

5. Drill out four 5/16" holes and four 1/4" holes along the bolt pattern in the AEV Front Splash Guard (fig. 3).

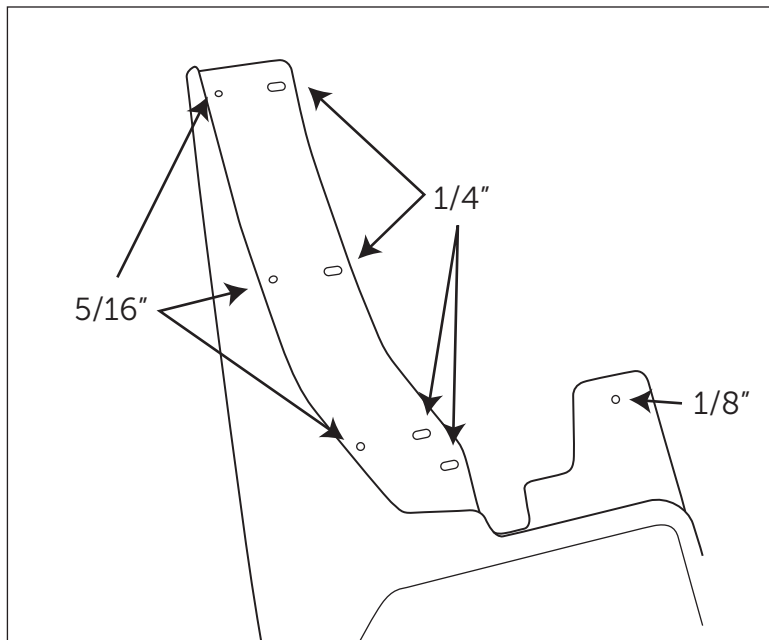


Figure 3

6. Use the four factory bolts removed in step 3 to loosely install the Splash Guard onto the vehicle along the inner holes.



- Using the Splash Guard as a template, drill the innermost hole to 5/16" into the wheel liner (fig. 5). Drill the outer three holes to 1/4" into the fender flare (fig. 4). NOTE: Be sure Splash Guard is in the proper position and parallel to the ground.

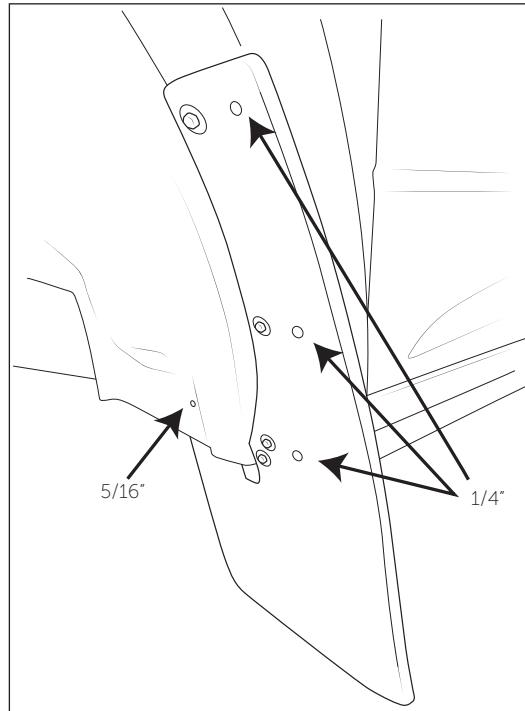


Figure 4

- Tuck the innermost tab of the Splash Guard behind the wheel liner and install the supplied M6 bolt, nut, and washer through the hole drilled in previous step (fig. 5).
- Install supplied fir tree fasteners through the outer most holes into the fender flare (fig. 5).

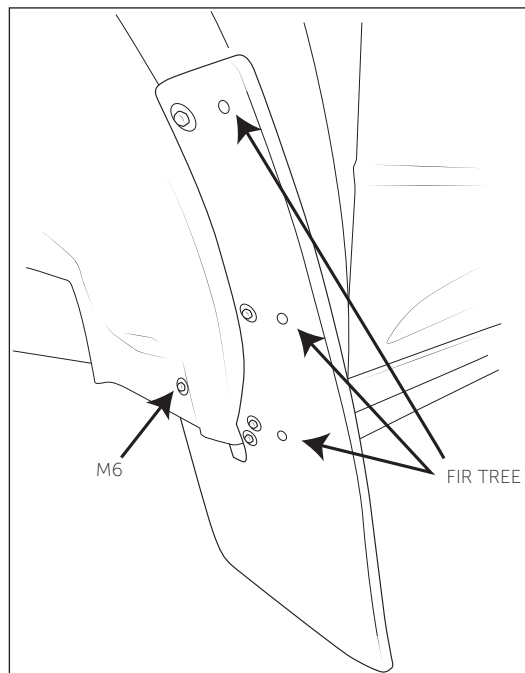


Figure 5

- Tighten all fasteners, again being sure the bottom of the Splash Guard is parallel to the ground.