



40" Front Splash Guard

2019+ RAM HD 2/3500

NEW PRODUCT

Please visit www.aev-conversions.com to view the most current installation guide for this product.

This is a new product and we want to make sure that you receive the latest and most accurate information based on customer feedback, product revisions, and/or model year updates. We value customer feedback, so we encourage you to contact our Technical Support department if you have any suggestions on how to make the installation of this product easier or if you have any questions regarding the installation of this product. AEV's Technical Support can be reached by email at tech@aev-conversions.com or by giving us a call at (248)-926-0256.



PLEASE READ BEFORE YOU START

To guarantee a quality installation, we recommend reading these instructions thoroughly before beginning any work. These instructions assume a certain amount of mechanical ability and are not written nor intended for someone not familiar with auto repair.

INCLUDED PARTS	QTY	REQUIRED TOOLS
Front Splash Guards (LH/RH)	2	1/4" & 1/8" Drill Bit
M6 x 20mm Hex Head Bolts	6	Right Angle (preferred) Drill
M6 Hex Nuts	6	Utility Knife
#1/4" hi-lo 1.5" Bolt	8	Eye Protection
M6 x 18mm Washer	8	Common Hand Tools
Wire Harness Brackets (LH/RH)	2	
1/4" x 1' Washer	2	
Christmas Tree Fasteners	8	

I. Front Wire Harness Re-Position

1. Remove headlamp brackets and SAVE factory hardware (fig 1.)

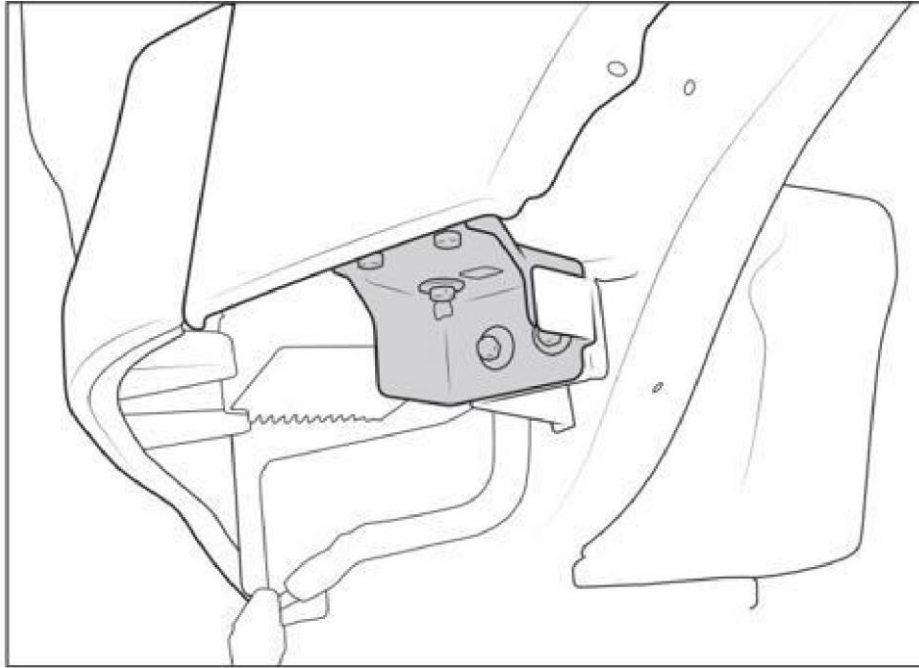


Figure 1

2. Reposition wire harnesses on driver and passenger sides.

A) Carefully remove wire harness connectors from factory positions (fig. 2) and unclip the harness from the pinch weld to allow slack.

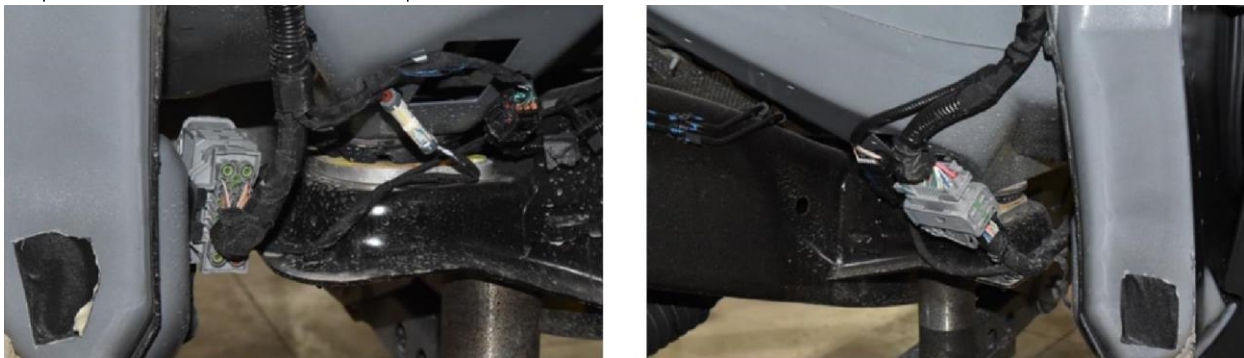


Figure 2 Passenger side (left) Driver side (right)

B) Install AEV harness retention brackets onto the body mounts on both sides of the vehicle using M6 x 1.0 hex bolts, washers, and flange nuts (fig.3).

NOTE: 4500/5500 trucks will not be able to use these brackets. Please refer to the pre-2019 Front Highmark instructions for details on wire re-routing.

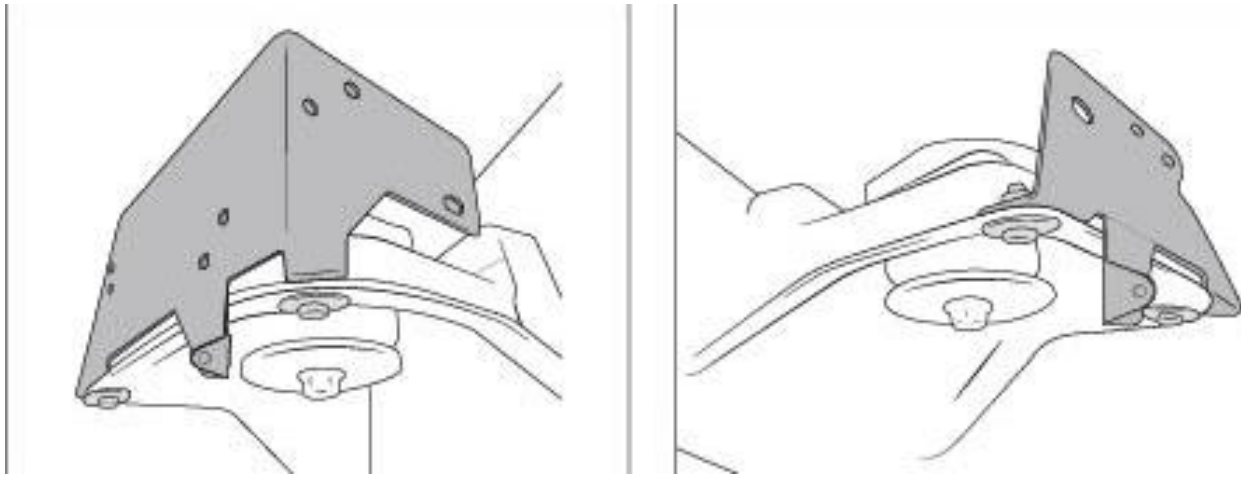


Figure 3: Passenger-side (left) Driver-side (right)

3. Reposition and secure the factory wire harness connectors onto the AEV brackets (fig. 4).

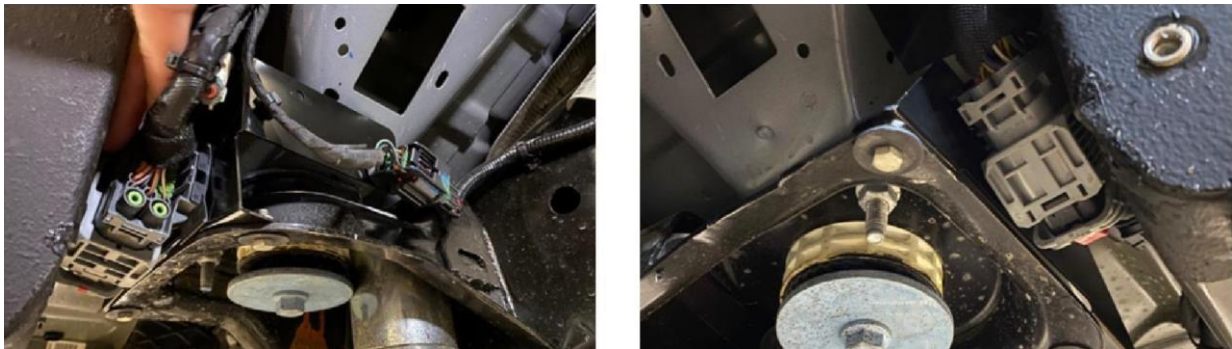


Figure 4

A) Route and secure the factor harness inboard of the pinch weld on both driver and passenger sides (fig 5).



Figure 5

II. Front Splash Guard Installation

1. Drill out the holes on each Splash Guard to remove excess material using a 5/16-in. drill bit.
2. Position the Splash Guard to AEV flare aligning bottom edge parallel to ground.
3. All four (4) hole locations should be installed with self-tapping screw included
4. Loosely install a #10 x 1.5" bolt with #10 washer to each location (Fig. 6). It is recommended to begin at top location and loosely install all fasteners and obtain best guard to body fit before tightening all fasteners **HAND TIGHTEN ONLY. DO NOT USE POWER TOOLS.**

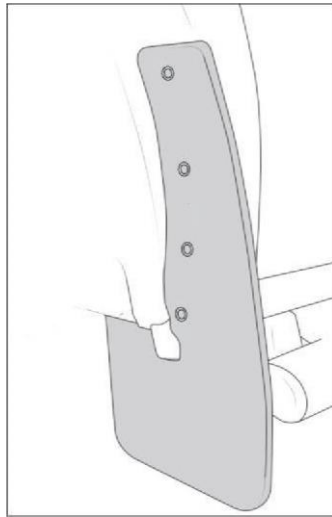


Figure 6

5. Position the lower inside edge of the guard behind the liner.
6. Using the guard as a template, drill a 5/16-in. hole through the liner.
7. Insert an M6 x 35mm bolt with M6 x 18mm washer through the liner and guard and secure with another M6 x 18mm washer and M6 hex nut behind the Splash Guard and wire bracket (Fig. 7). Torque ONLY THIS BOLT to 5 ft-lbs/60 in-lbs. DO NOT USE POWER TOOLS.

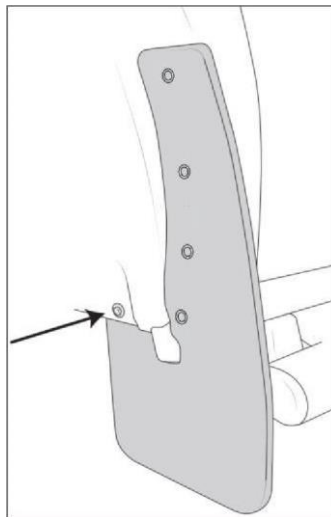


Figure 7