



FULL RAIL KIT

FOR AEV ROOF RACK



AEV30210AA
Last Updated: 08/01/12

INSTALLATION GUIDE



PLEASE READ BEFORE YOU START

TO GUARANTEE A QUALITY INSTALLATION, WE RECOMMEND READING THESE INSTRUCTIONS THOROUGHLY BEFORE BEGINNING ANY WORK. THESE INSTRUCTIONS ASSUME A CERTAIN AMOUNT OF MECHANICAL ABILITY AND ARE NOT WRITTEN NOR INTENDED FOR SOMEONE NOT FAMILIAR WITH AUTO REPAIR.

INCLUDED PARTS	QTY	REQUIRED TOOLS
Rail corners	4	Basic hand tools
Corner close out plate	4	
Side rails	2	
End rails	2	
Side rail feet	8	
End rail feet	6	
Screws	16	
Channel nuts	14	
Flat washers	14	
Bolts	14	



A. RAIL ASSEMBLY

1. Attach corner close out plate to the bottom of each corner piece using the supplied screws (Fig. 1).
2. Slide End Rail Feet identified with the part number M513 into the End Rails (3 each) and the Side Rail Feet into the Side Rails (4 each) as shown in Figure 2.
3. Insert corner pieces into the Rails (Fig. 3 #1) and secure with the supplied screws (Fig. 3 #2).

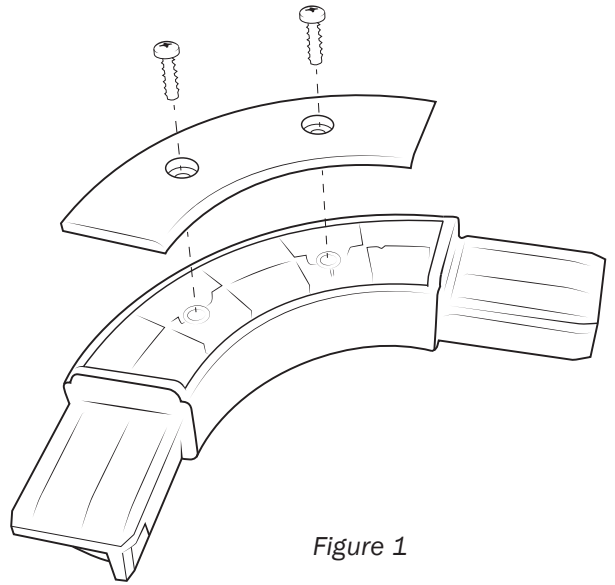


Figure 1

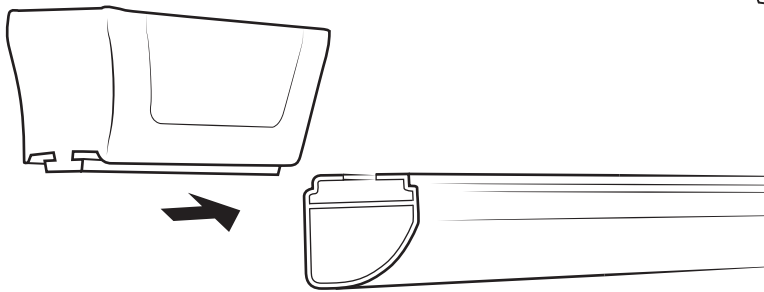


Figure 2

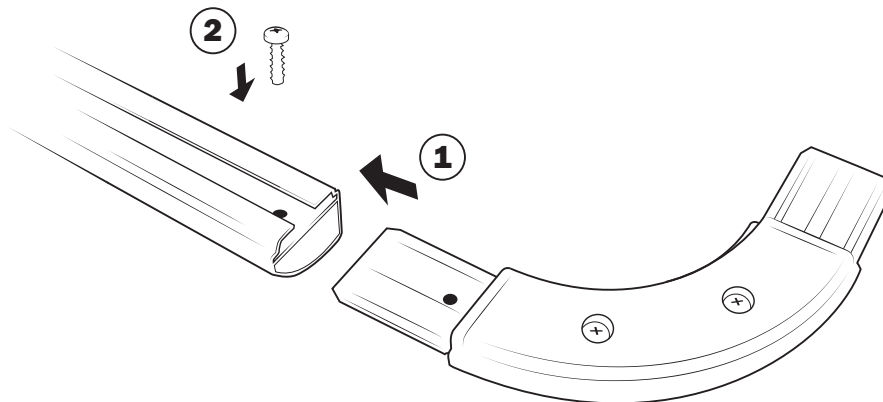


Figure 3



B. RAIL INSTALLATION

1. Attach supplied mounting hardware to rail feet (Fig. 4). Leave the hardware OFF of the rear three feet at this time.
2. Starting at the rear of the Roof Rack Platform and working forward, insert channel nuts into the corresponding channels on the platform (Fig. 5 #1).
3. Once the rail is in position over the platform, insert remaining three channel nuts into the platform channel and push forward to align with rail feet. Now insert bolt and flat washer to secure front feet (Fig. 5 #2).
4. Position side rail feet so they are evenly spaced along the platform then tighten all bolts.

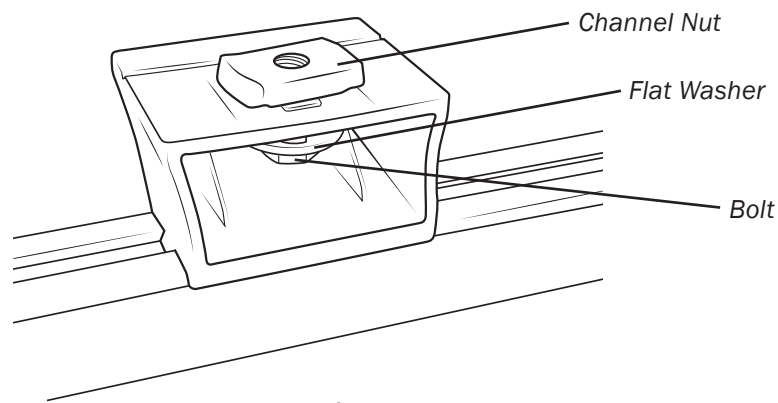


Figure 4

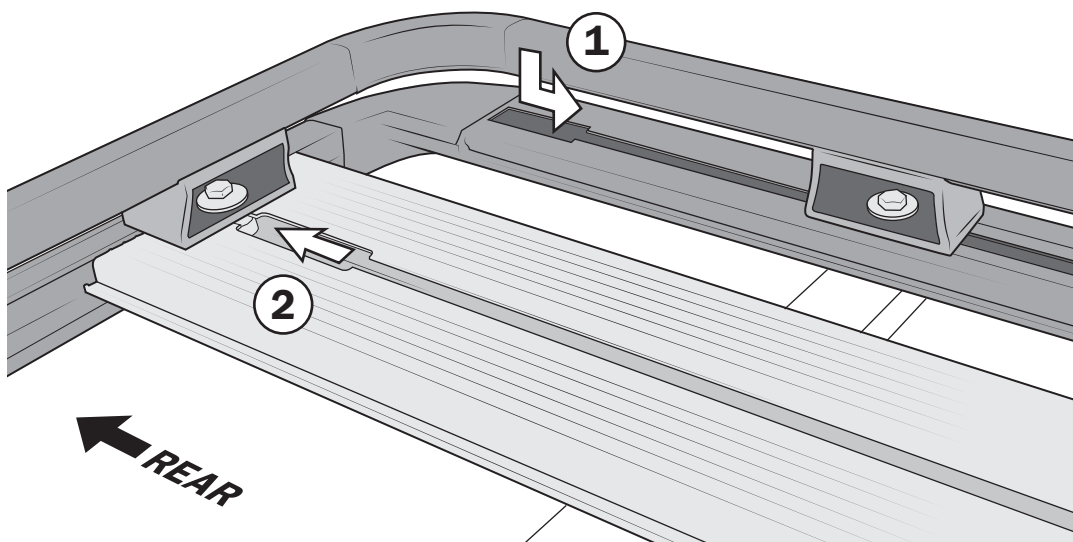


Figure 5