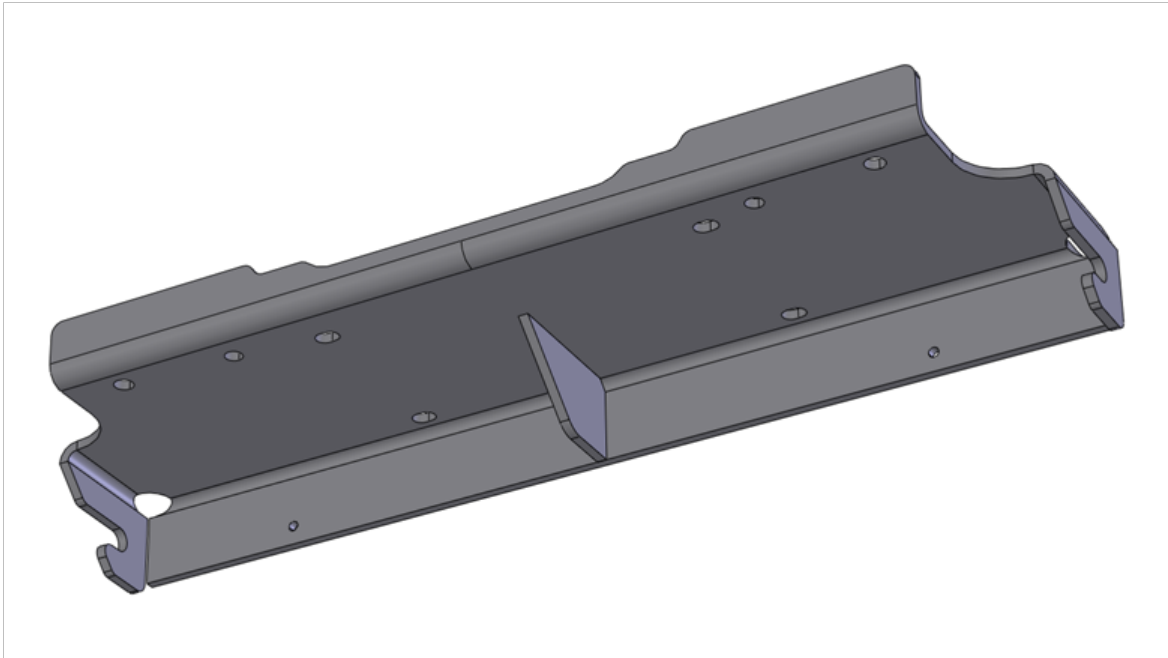




JK WINCH MOUNT



AEV30111AD

Last Updated: 12/07/18

INSTALLATION GUIDE



PLEASE READ BEFORE YOU START

TO GUARANTEE A QUALITY INSTALLATION, WE RECOMMEND READING THESE INSTRUCTIONS THOROUGHLY BEFORE BEGINNING ANY WORK. THESE INSTRUCTIONS ASSUME A CERTAIN AMOUNT OF MECHANICAL ABILITY AND ARE NOT WRITTEN NOR INTENDED FOR SOMEONE NOT FAMILIAR WITH AUTO REPAIR.

INCLUDED PARTS	QTY	REQUIRED TOOLS
Winch Plate	1	Common Hand Tools
Hardware Pack	1	

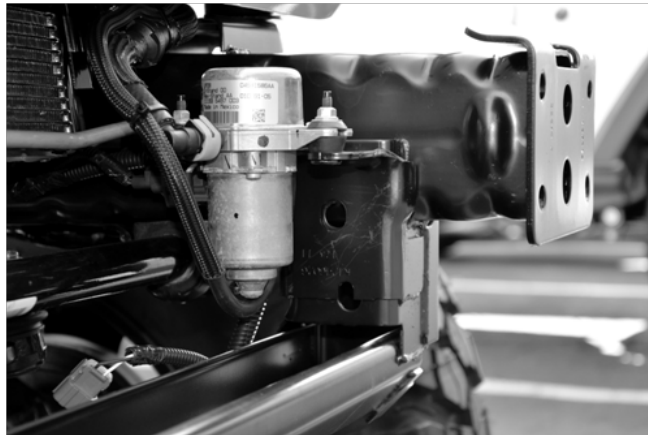


A. VEHICLE PREPARATION

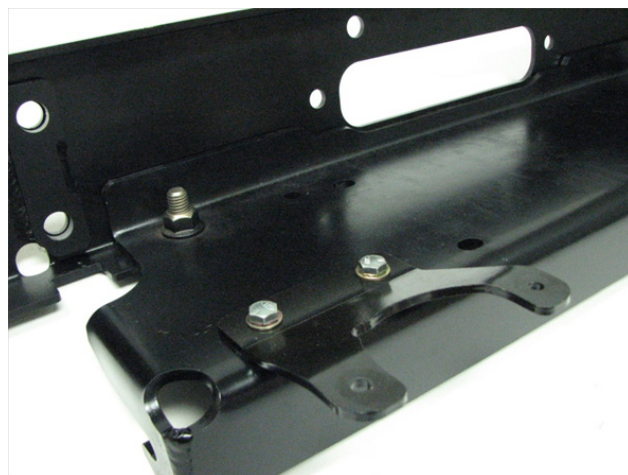
1. You will need to remove the Front Bumper and Fairlead Bracket from the vehicle if previously installed.
2. Start with removing the four (4) 3/8" bolts on the backside of the bumper attaching the bumper to the closeout brackets.
3. While a helper holds the bumper in place, remove the eight (8) main button head bolts.
4. Make sure you have a good hold of both the bumper and fairlead bracket. Remove from vehicle.

B. VACUUM PUMP RELOCATION 2012+ VEHICLES FOR 2007-2011 VEHICLES SKIP TO STEP C.

1. Remove and save the 2 M6 nuts and lift the vacuum pump off of the factory bracket.

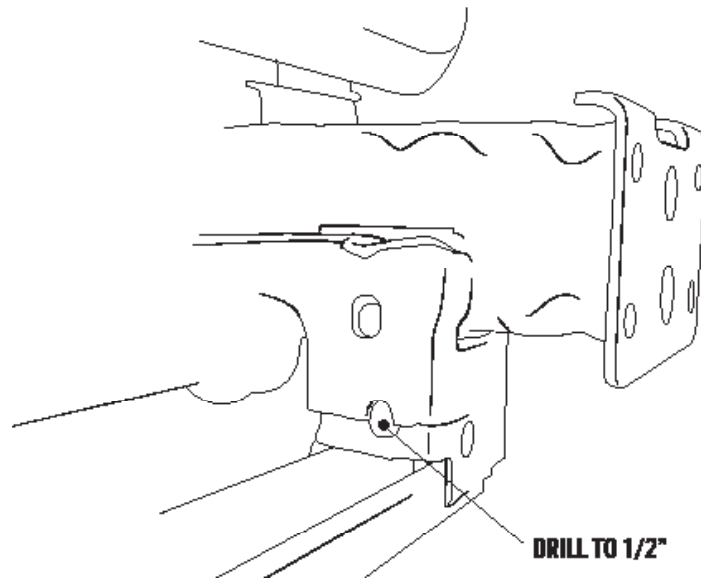


2. Assemble the supplied AEV vacuum pump bracket to the winch mount using the supplied hardware (as shown).

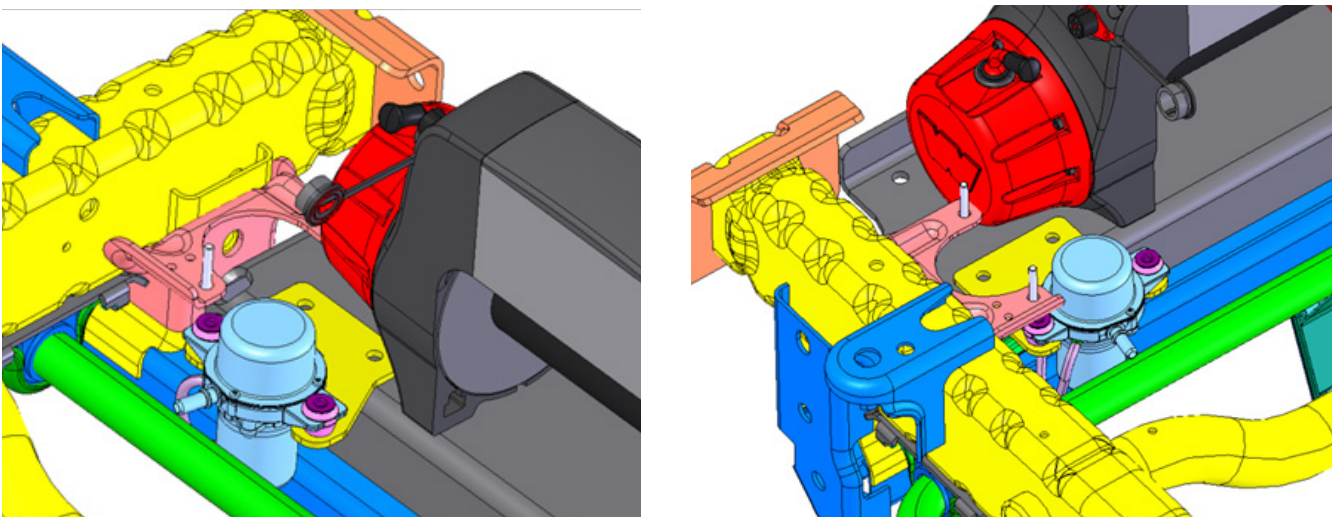


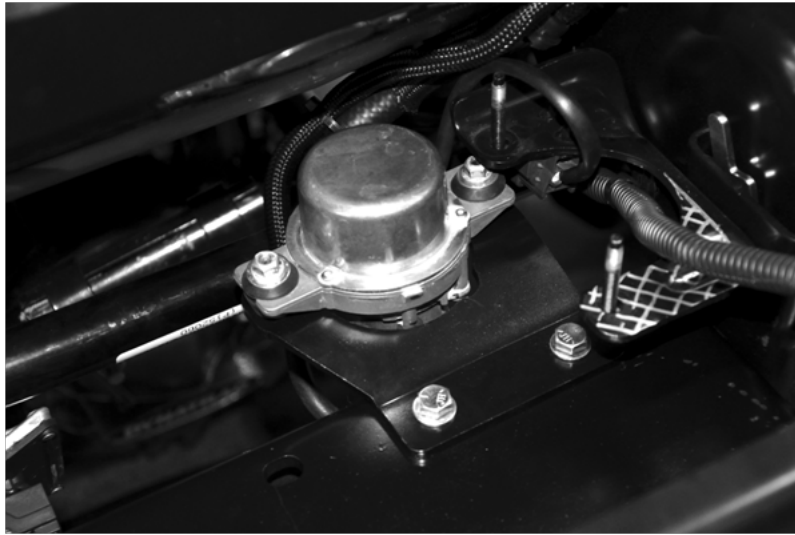


3. Drill out the lower mounting hole to 1/2" as shown to allow the bolt to pass through.



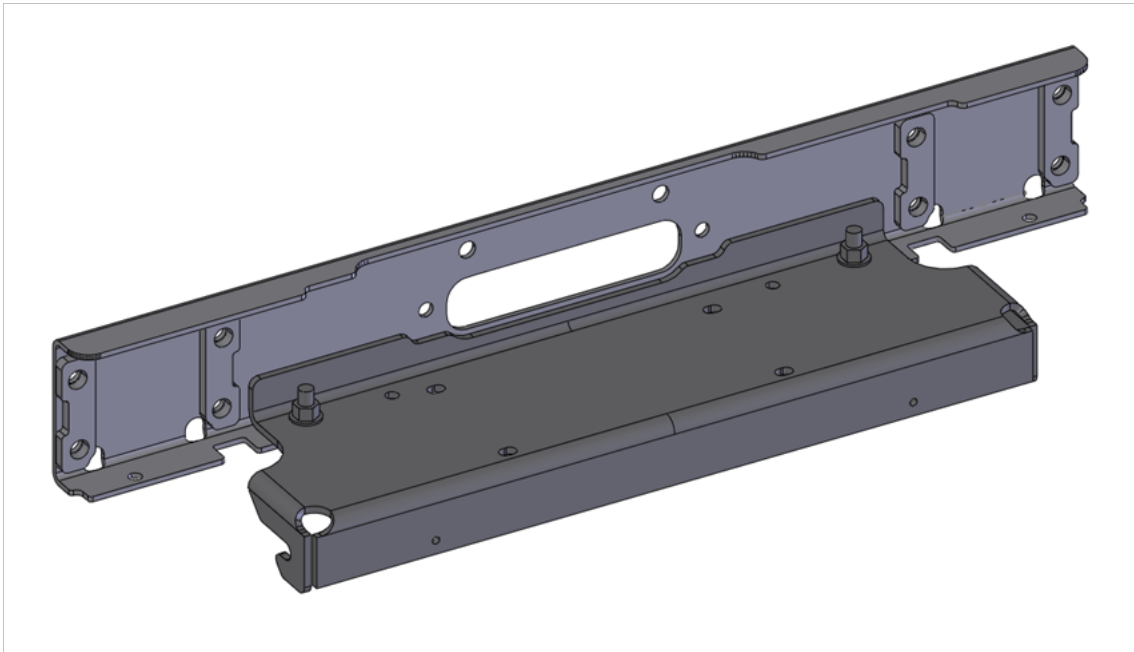
4. Depending on the winch being installed, you may need to trim the factory vacuum pump bracket for necessary clearance (as shown). The photograph on the next page shows a marked-up bracket showing the area that needs to be trimmed.





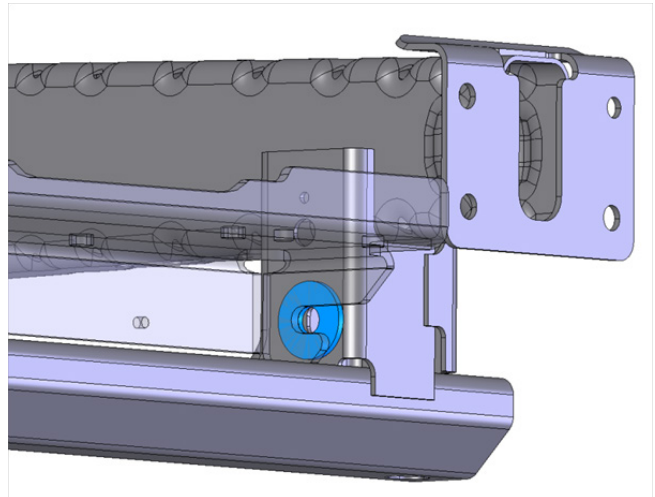
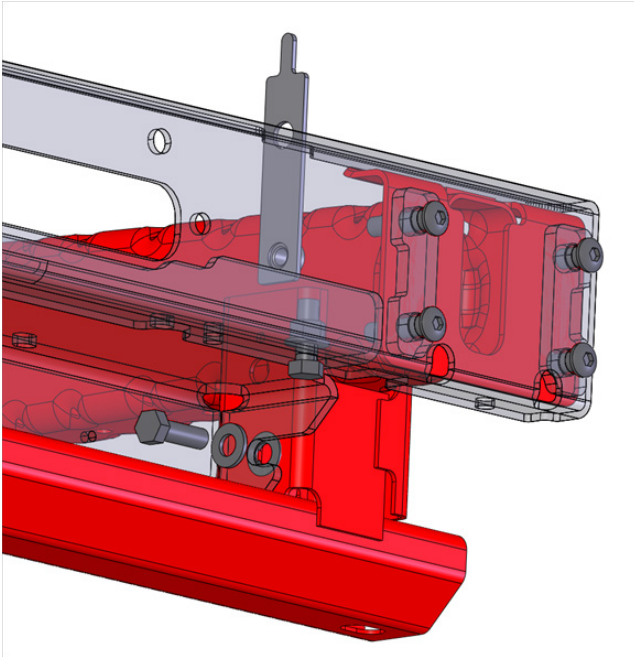
C. WINCH PLATE INSTALLATION

1. Assemble the winch plate and fairlead brackets together. Use the M12 hex head bolts and flange nuts going from the bottom up (washer not needed) as shown.





2. Place the winch mount assembly into position onto the frame.
3. With the winch mount aligned, bolt the winch mount to the lower frame attachment points using the M12 hex head bolts, washers, and nut plate
4. FOR 2007 - 2011 VEHICLES, USE THE SUPPLIED LARGE, THICK WASHER BETWEEN THE WINCH MOUNT AND FRAME AS SHOWN. THERE IS ADDITIONAL HARDWARE AND BRACKETS INCLUDED IN THE KIT FOR 2012+ VEHICLES ONLY.



5. Install the square nuts that come with the winch kit into the winch and feet. A little silicone is helpful to hold them in place.
6. Place the winch onto the winch mount. DO NOT install winch mounting bolts at this time. You will do this after installing the bumper.

IMPORTANT NOTE

When installing the Winch YOU MUST use the AEV supplied washers ALONG WITH the bolts from the Winch kit (as shown). This will ensure a safe and secure attachment.

