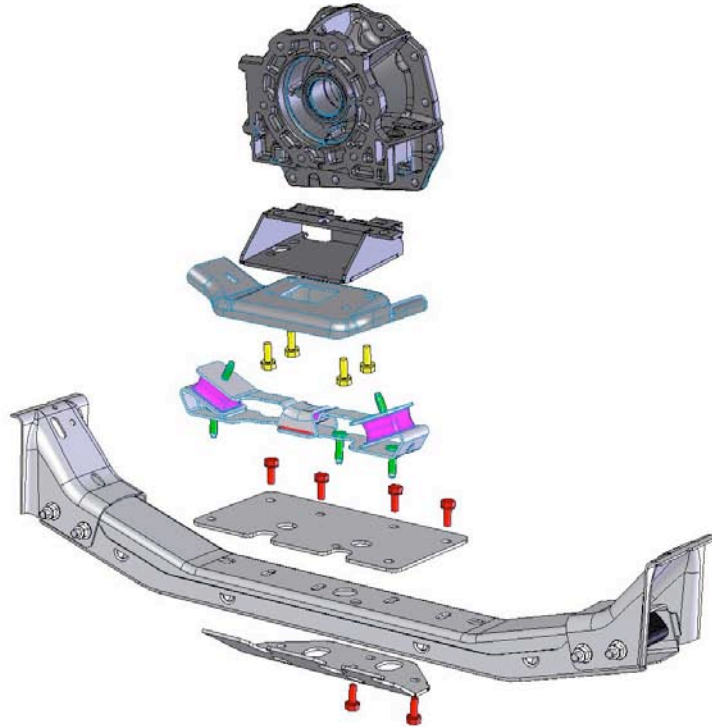




AMERICAN EXPEDITION
VEHICLES

JK V8 HEMI® BUILDER KIT Engine & Transmission Mounting



Installation Guide

5.7, 6.1 WK or XK Powertrains with Dodge 4WD Adapter in place
07+ JK – SWB, LWB, LHD only



INSTRUCTIONS

A. MOUNTING PREPARATION

1. After the 3.8L Powertrain is removed, disconnect the front ABS connectors at the frame and remove the right side wiring harness bolt on clips that are located on the frame behind the right side shock tower.
2. Cut off the OE engine mounts from the frame and clean up the area with an 80 grit sanding disc.

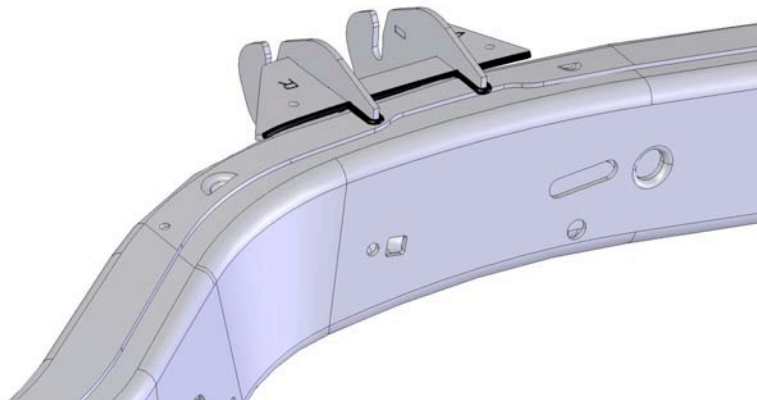
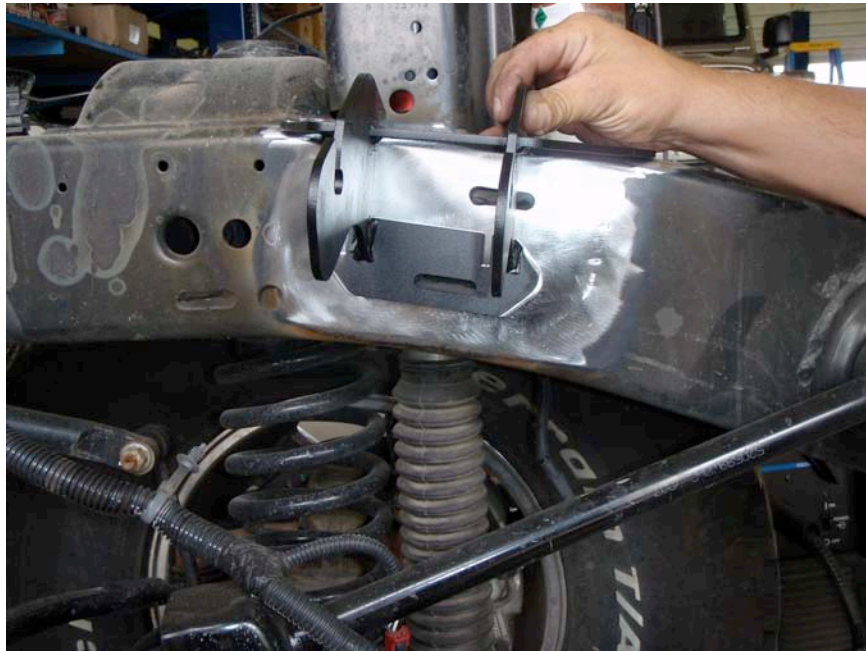
B. INSTALLATION OF THE ENGINE MOUNTS

1. Each engine mount has an L or R inscribed into the metal indicating the Left from the Right. There is also an arrow indicating the front of the mount.
2. If the mounts are coated, remove the coating in all areas to be welded.
3. Place the mounts on the frame rail and line up the oval holes precisely. Tack in place and finish weld as shown.
4. Paint all bare areas as required
5. Reinstall the wiring harness mount with the stock hardware.



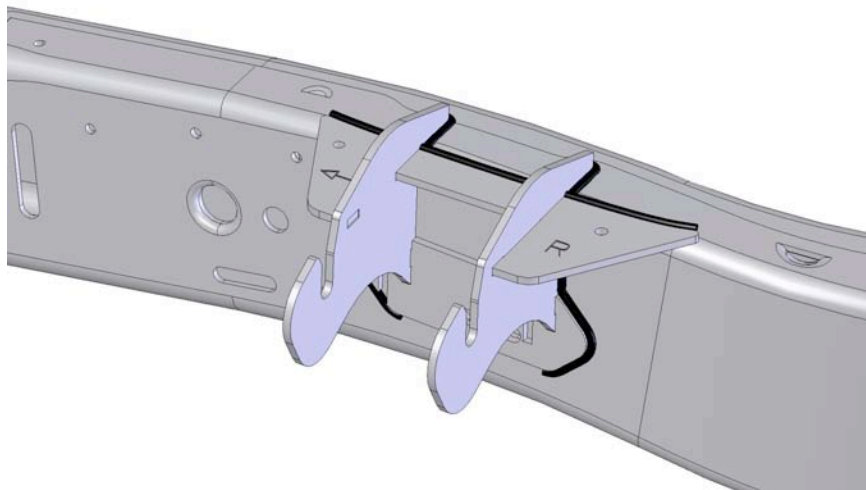
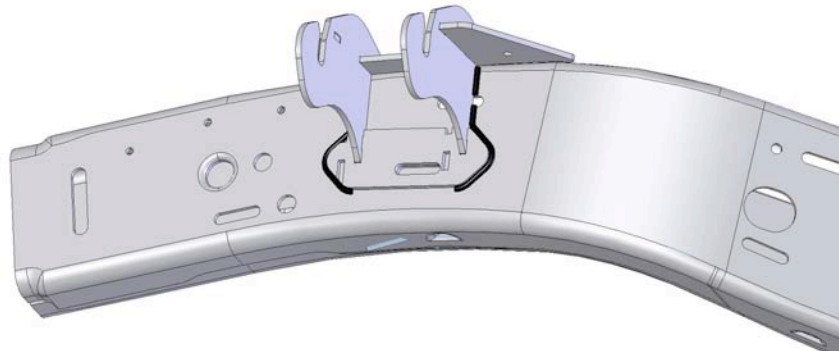
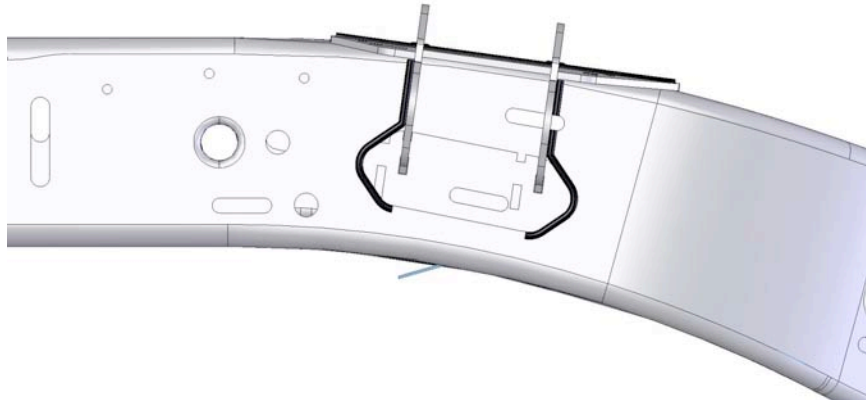


AMERICAN EXPEDITION
VEHICLES





AMERICAN EXPEDITION
VEHICLES





C. INSTALLATION OF THE TRANSMISSION MOUNT

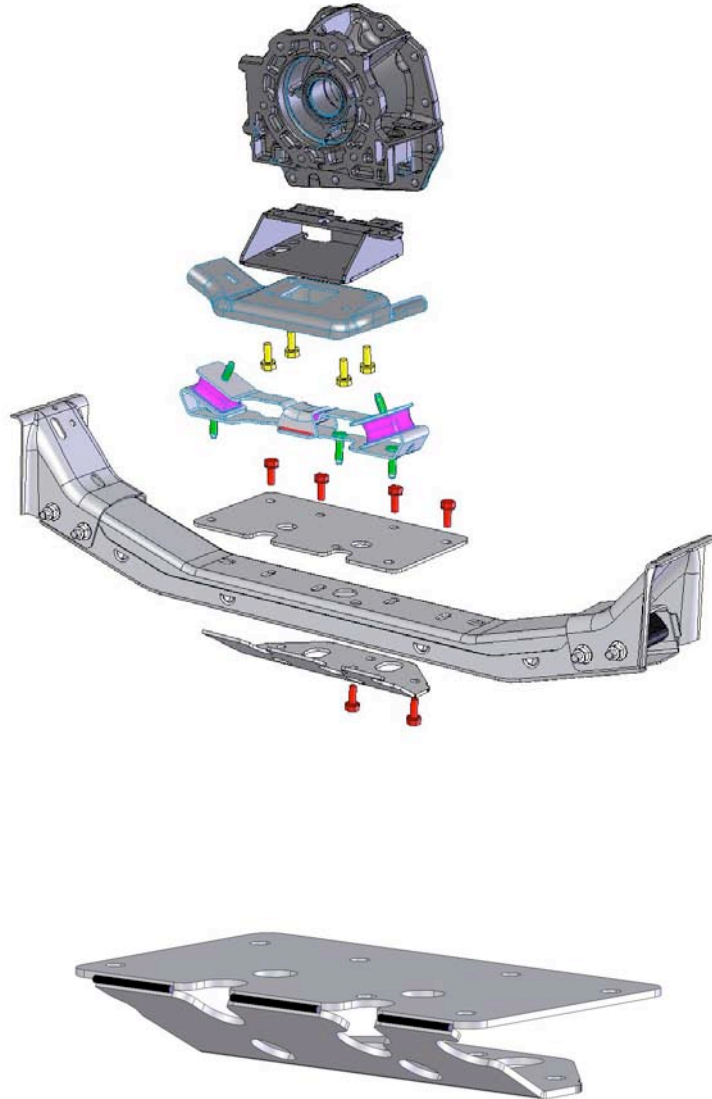
1. All 5-45 Transmissions must have the ¾ Ton or 1 Ton Dodge 4WD adapter (Mopar 52119433AB) along with the seal (Mopar 52119498AA) installed prior to the transmission mount.
2. Install the AEV Mount to the 4WD Adapter on the transmission using the stock bolts.
3. Install the stock JK transmission Isolator to the AEV Transmission Mount using the two 3/8x1" bolts, nuts and washers and two 1/2"x1" bolts, nuts and washers.

D. INSTALLATION OF THE CROSS-MEMBER MOUNT

1. Begin by bolting the top plate of the transmission cross member mount to the JK transmission isolator using the stock hardware.
2. Bolt the top plate of the transmission cross member mount to the JK cross member using 4 of the 1/2-13 bolts, washers and flange nuts.
3. Bolt the bottom plate of the transmission cross member mount to the bottom of the JK cross member using three of the stock bolts into the cross member nutserts. Drill out one hole using the bottom plate as a drill template. Use the remaining two 1/2-13 bolts, washers and flange nuts to secure the bottom plate to the cross member.
4. Remove any paint from the top and bottom plates and weld as shown.
5. Paint any raw material and welds.

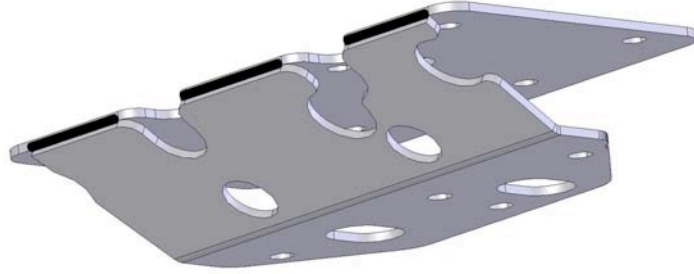


AMERICAN EXPEDITION
VEHICLES





AMERICAN EXPEDITION
VEHICLES





A M E R I C A N E X P E D I T I O N
V E H I C L E S

COMMENTS OR QUESTIONS?

American Expedition Vehicles

Phone: 406.251.2100

Email: tech@aev-conversions.com

Website: <http://www.aev-conversions.com>